



ONE-WAY DRAW
CURTAIN



CENTER DRAW
CURTAINS

FOREST FMS ADJUSTABLE WAVE SET Assembly instructions

Watch the instruction video
Scan the QR code with your smartphone or tablet



THE WORLD
BEHIND
YOUR
CURTAINS



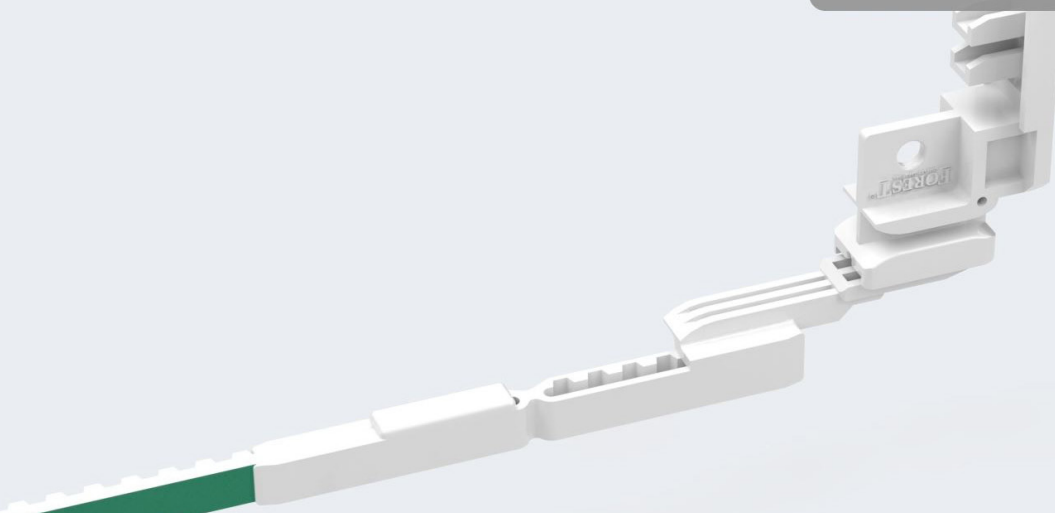
ASSEMBLY STEP 1 - SHORTEN THE FMS TRACK

REMOVE 10,5 CM OF THE TOTAL LENGTH REQUIRED



ASSEMBLY STEP 2 - CONNECT THE BELT

TO THE FMS BELT CONNECTOR



ASSEMBLY STEP 3 - SLIDE THE BELT INTO THE TRACK

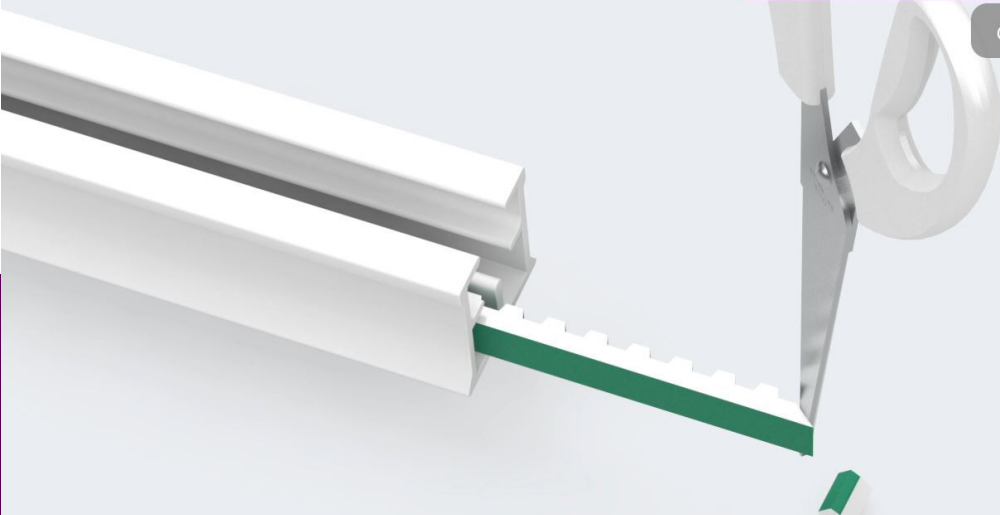
AND REMOVE THE FMS BELT CONNECTOR





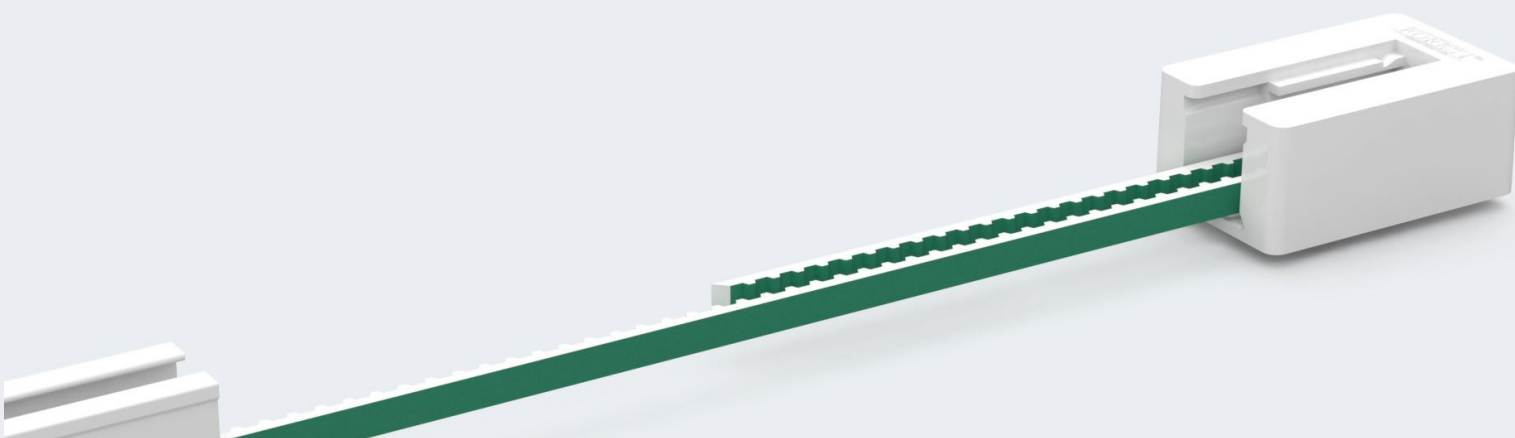
ASSEMBLY STEP 4 - CUT THE FIRST BELT TOOTH

CUT IT UNDER A 45° ANGLE



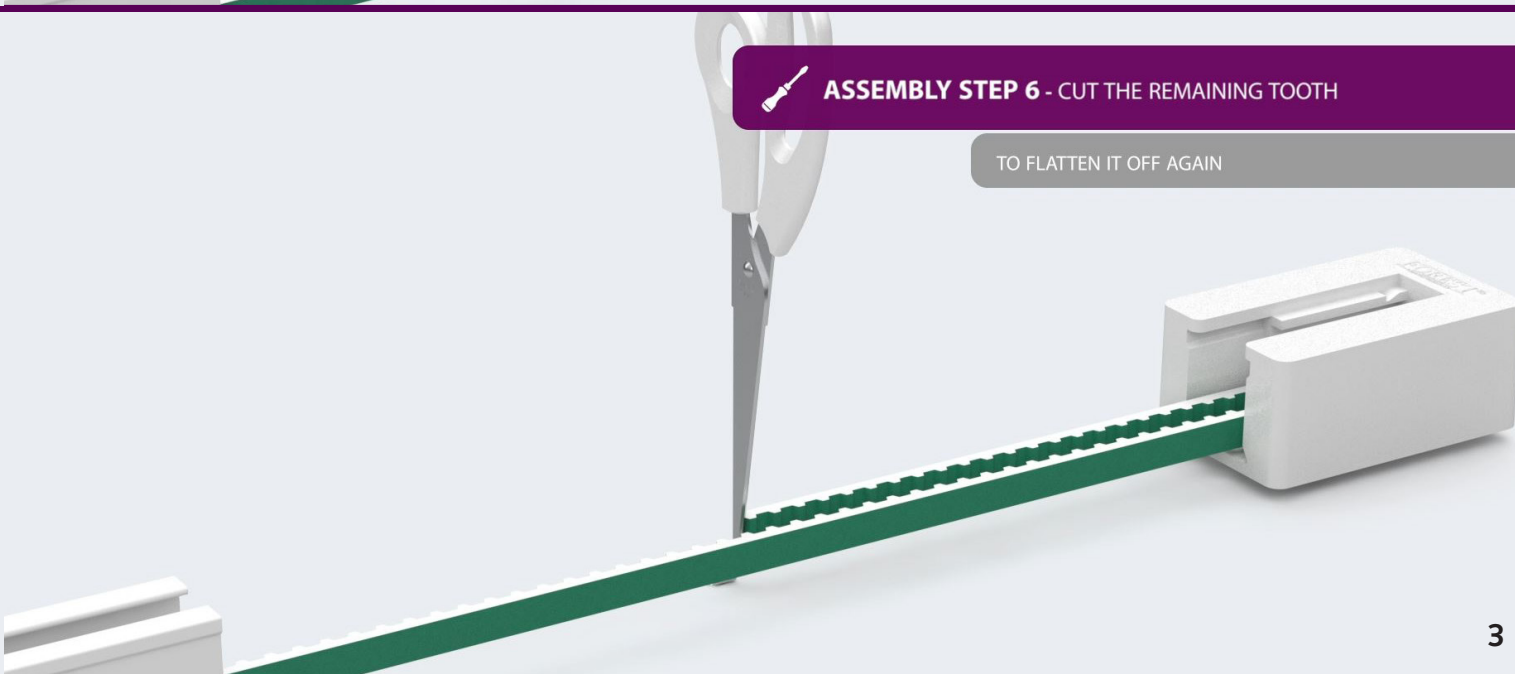
ASSEMBLY STEP 5 - CONNECT THE FMS RETURN PULLEY

BY PUSHING THE BELT THROUGH THE FMS RETURN PULLEY



ASSEMBLY STEP 6 - CUT THE REMAINING TOOTH

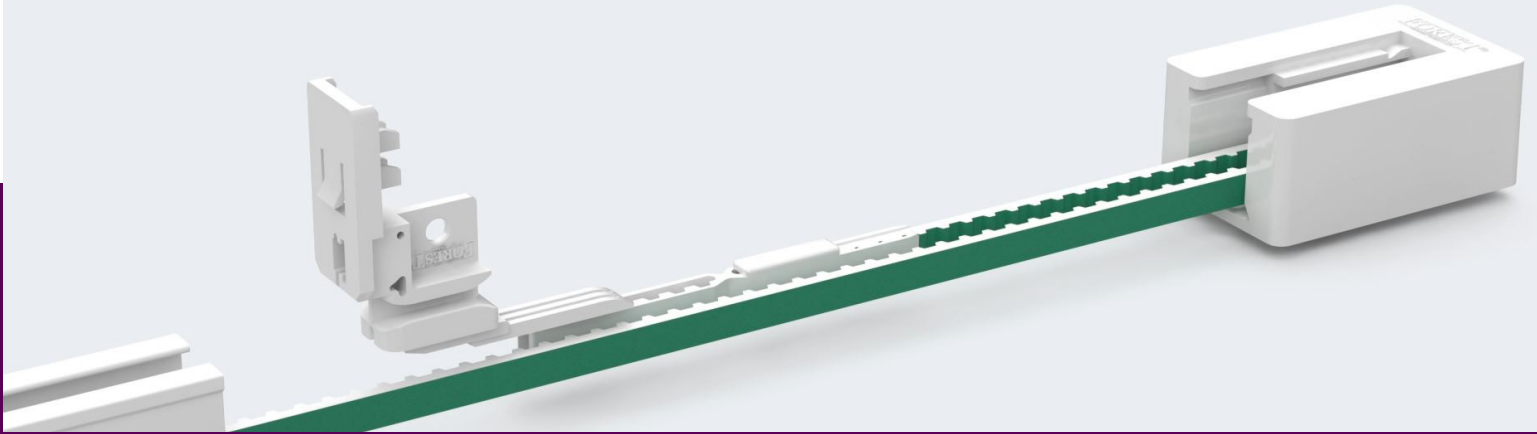
TO FLATTEN IT OFF AGAIN





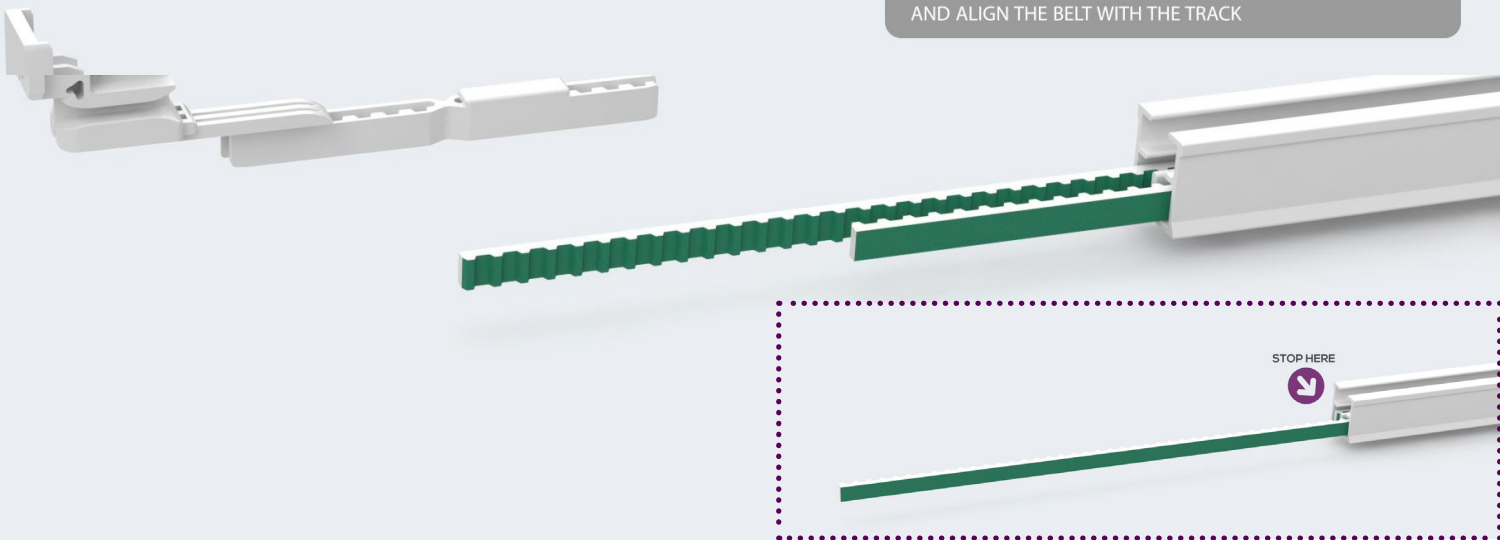
ASSEMBLY STEP 7 - CONNECT THE FMS BELT CONNECTOR

AND PUT THE BELT INTO THE TRACK



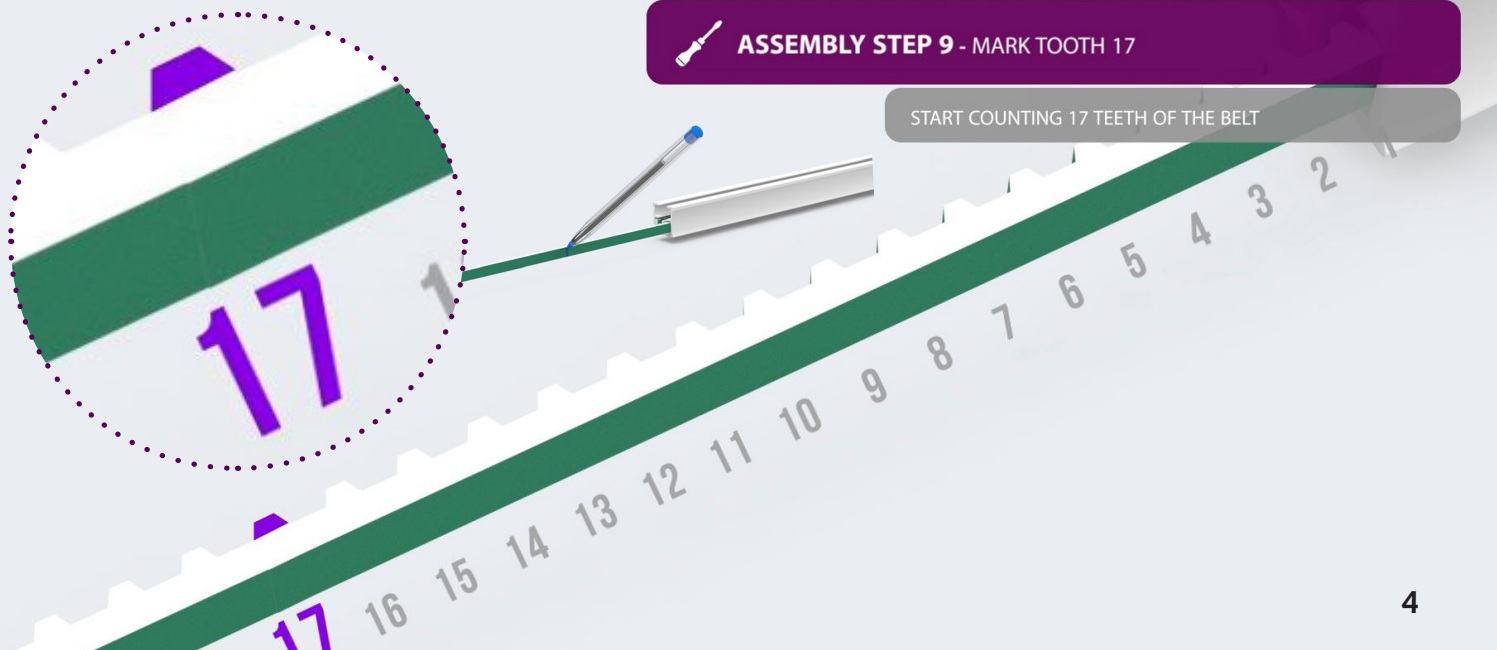
ASSEMBLY STEP 8 - REMOVE THE FMS BELT CONNECTOR

AND ALIGN THE BELT WITH THE TRACK



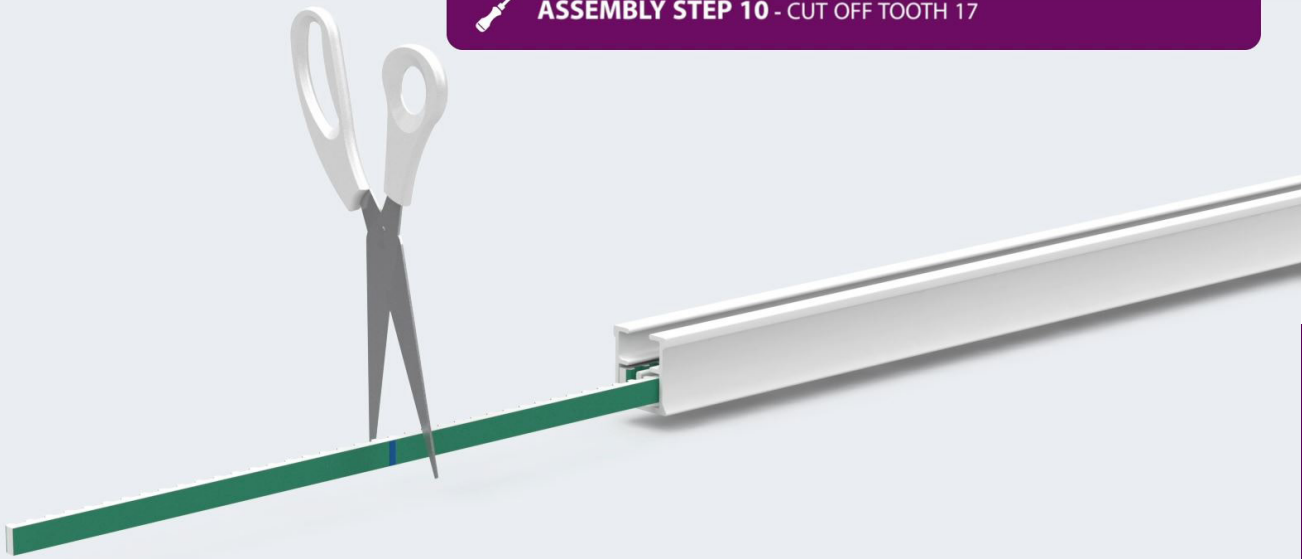
ASSEMBLY STEP 9 - MARK TOOTH 17

START COUNTING 17 TEETH OF THE BELT

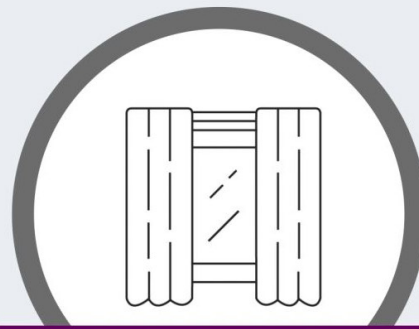




ASSEMBLY STEP 10 - CUT OFF TOOTH 17



CONTINUE THE FOLLOWING
STEPS WHEN INSTALLING
ONE-WAY DRAW CURTAINS



GO TO STEP 27
FOR CENTER DRAW CURTAINS

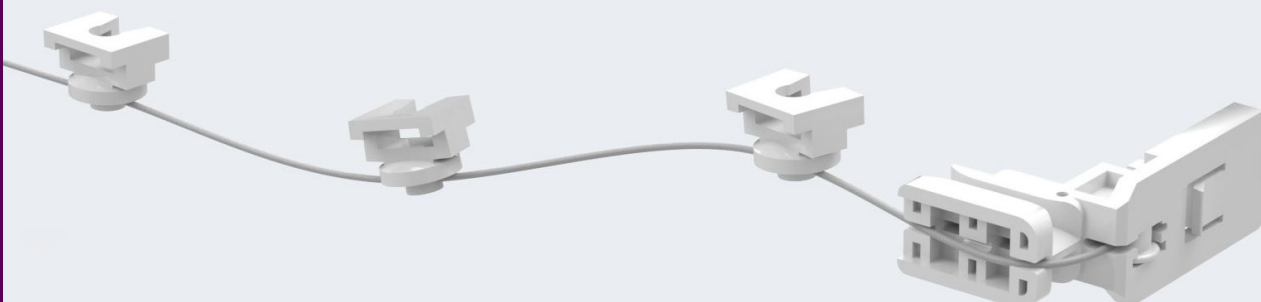
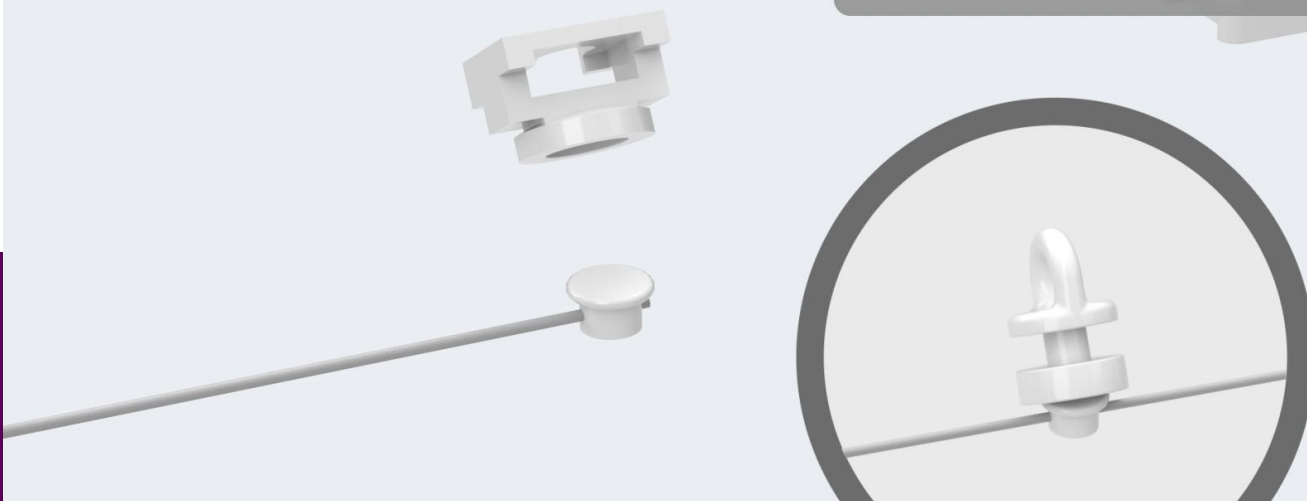


ASSEMBLY STEP 11 - ATTACH THE FMS BELT CONNECTOR



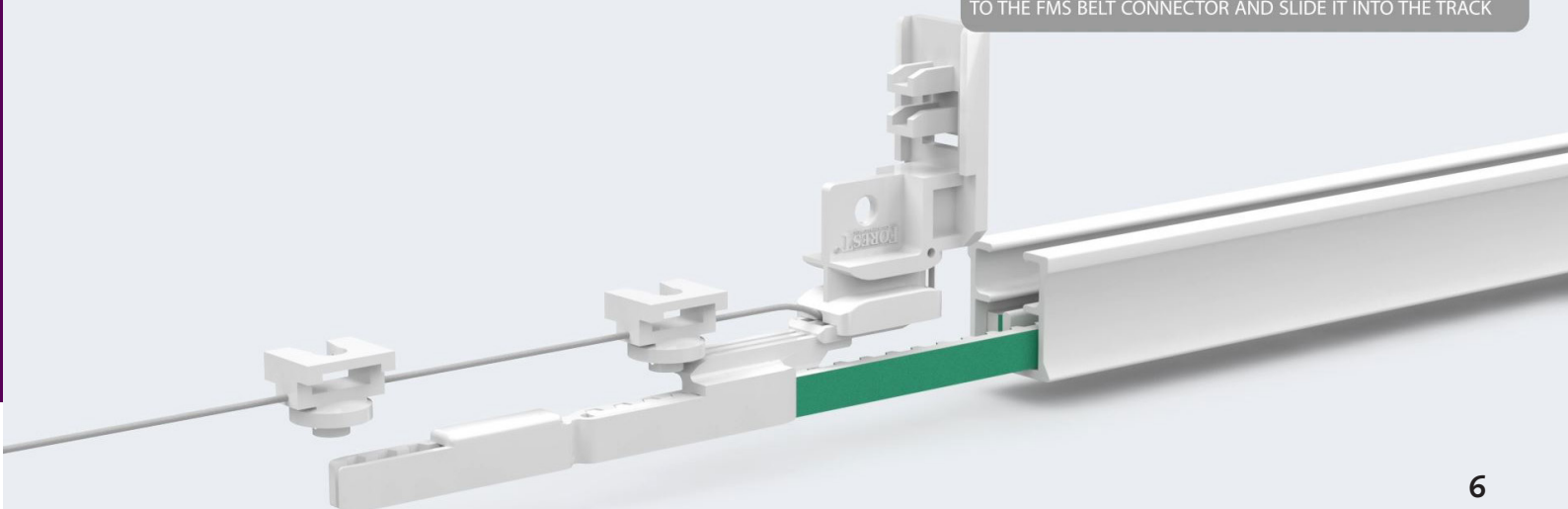
 **ASSEMBLY STEP 12** - CONNECT THE FMS MASTER CARRIER TO THE CORD

BY REMOVING THE CARRIER AND PLACING IT INTO THE FMS MASTER CARRIER



 **ASSEMBLY STEP 13** - CONNECT THE FMS MASTER CARRIER AND CORD

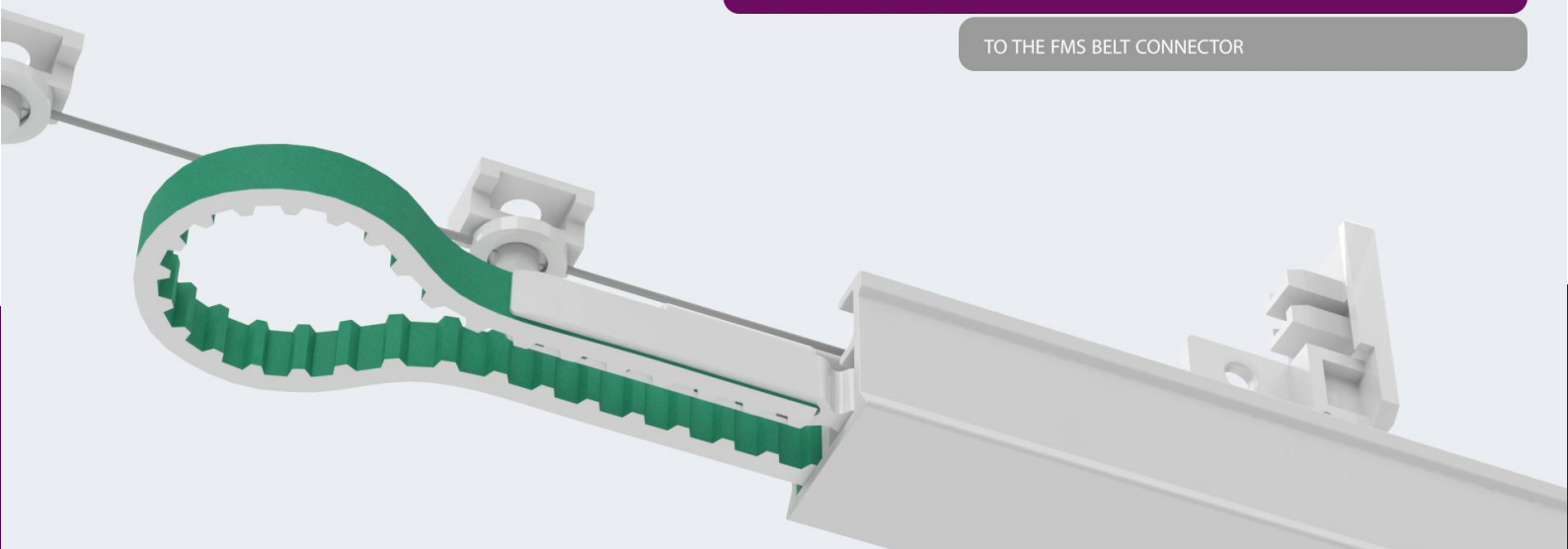
TO THE FMS BELT CONNECTOR AND SLIDE IT INTO THE TRACK





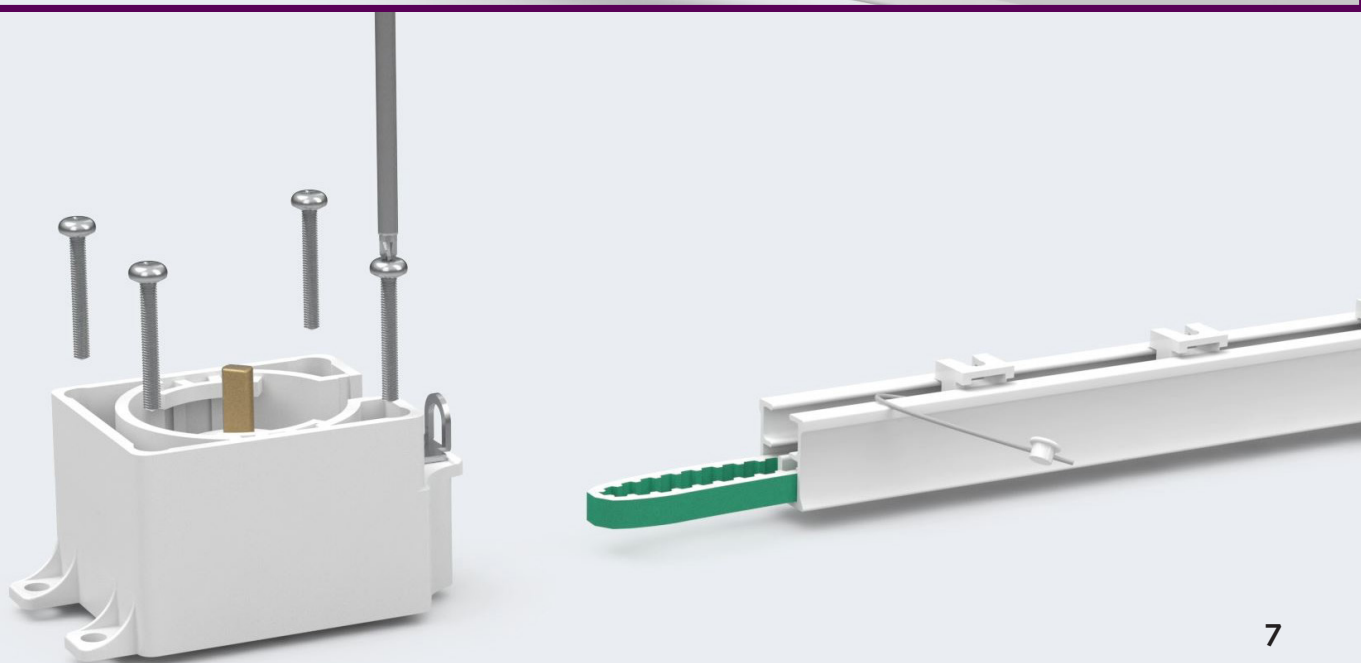
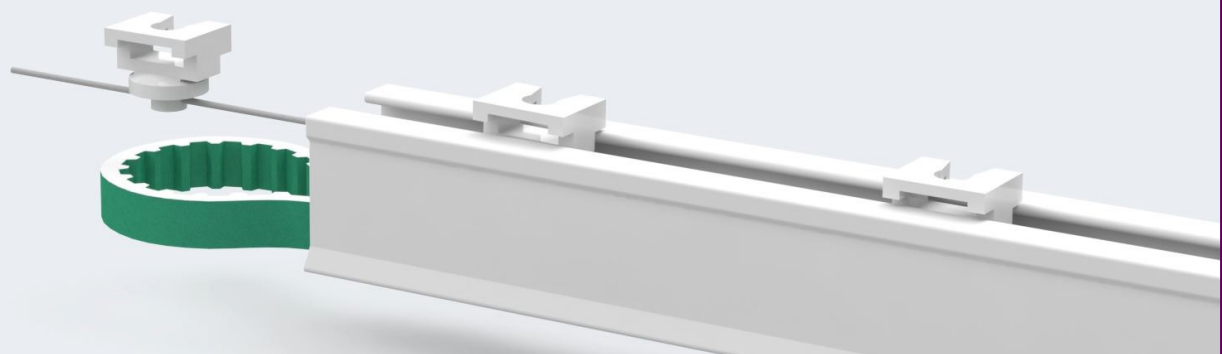
ASSEMBLY STEP 14 - CONNECT THE OTHER END OF THE BELT

TO THE FMS BELT CONNECTOR



ASSEMBLY STEP 15 - SLIDE THE FMS MASTER CARRIER

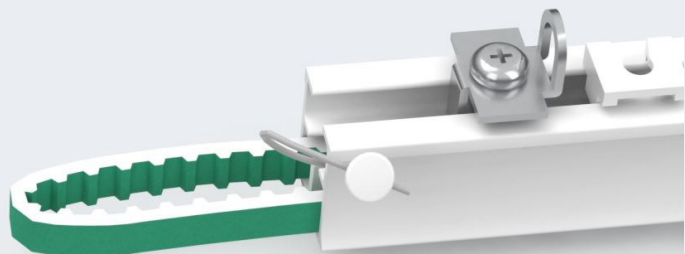
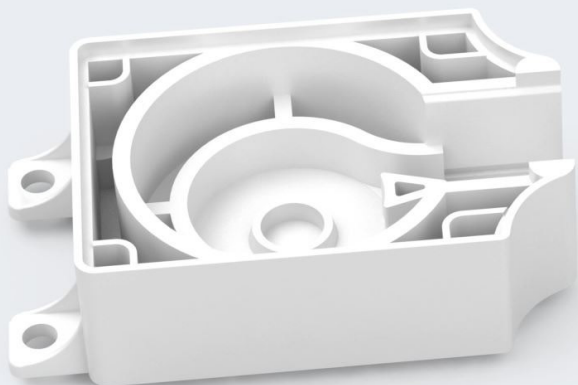
FULLY INTO THE TRACK AND REMOVE THE LAST CARRIER FROM THE CORD





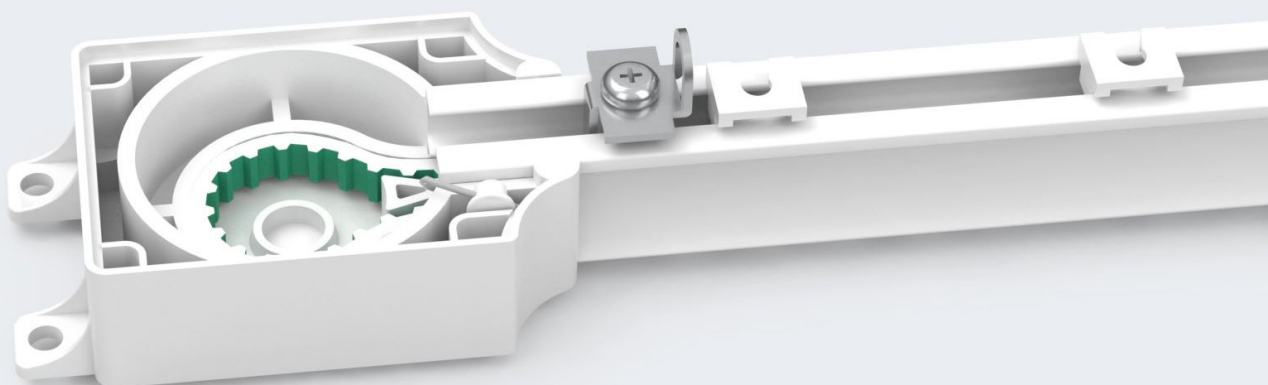
ASSEMBLY STEP 17 - PLACE THE FIXATING CLIP INTO TO TRACK

AND POSITION THE FMS MOTOR PULLEY TO THE TRACK



ASSEMBLY STEP 18 - LOCK THE CORD INTO THE FMS MOTOR PULLEY

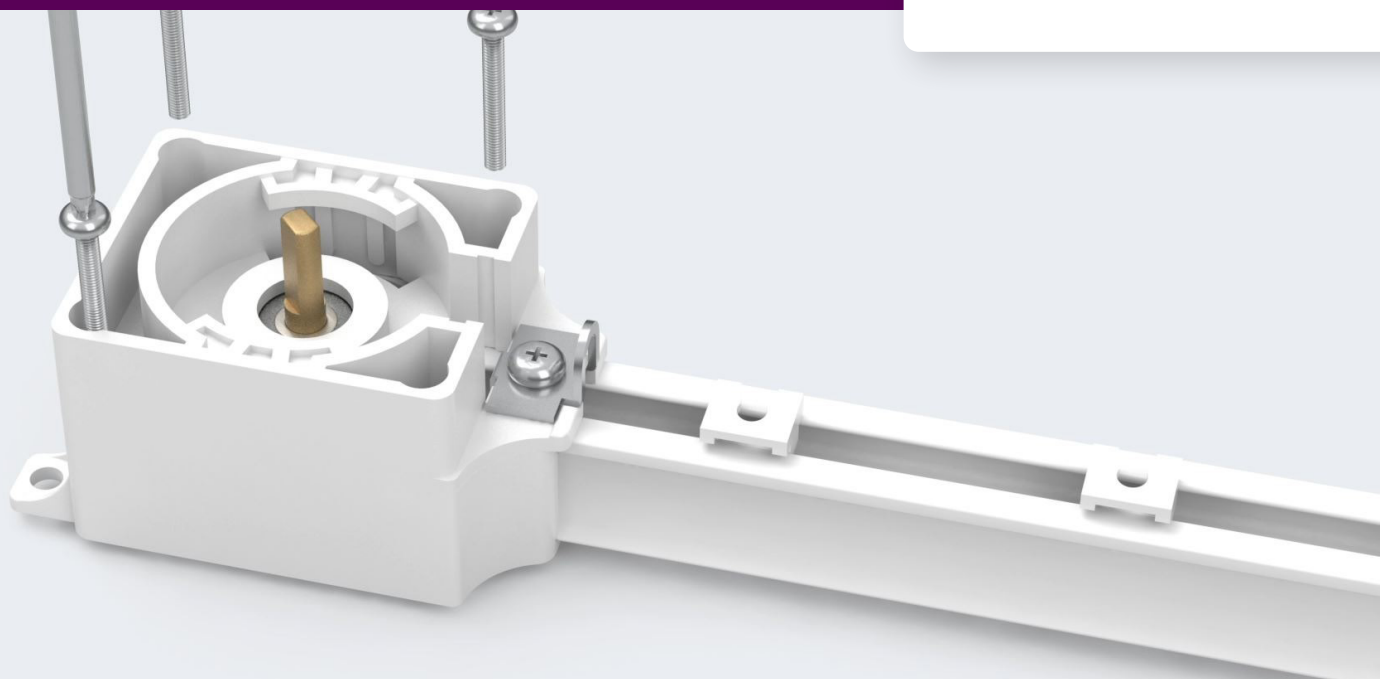
AND REPOSITION THE PARTS OF THE FMS MOTOR PULLEY



ASSEMBLY STEP 19 - PLACE THE CLIP OVER THE MOTOR PULLEY

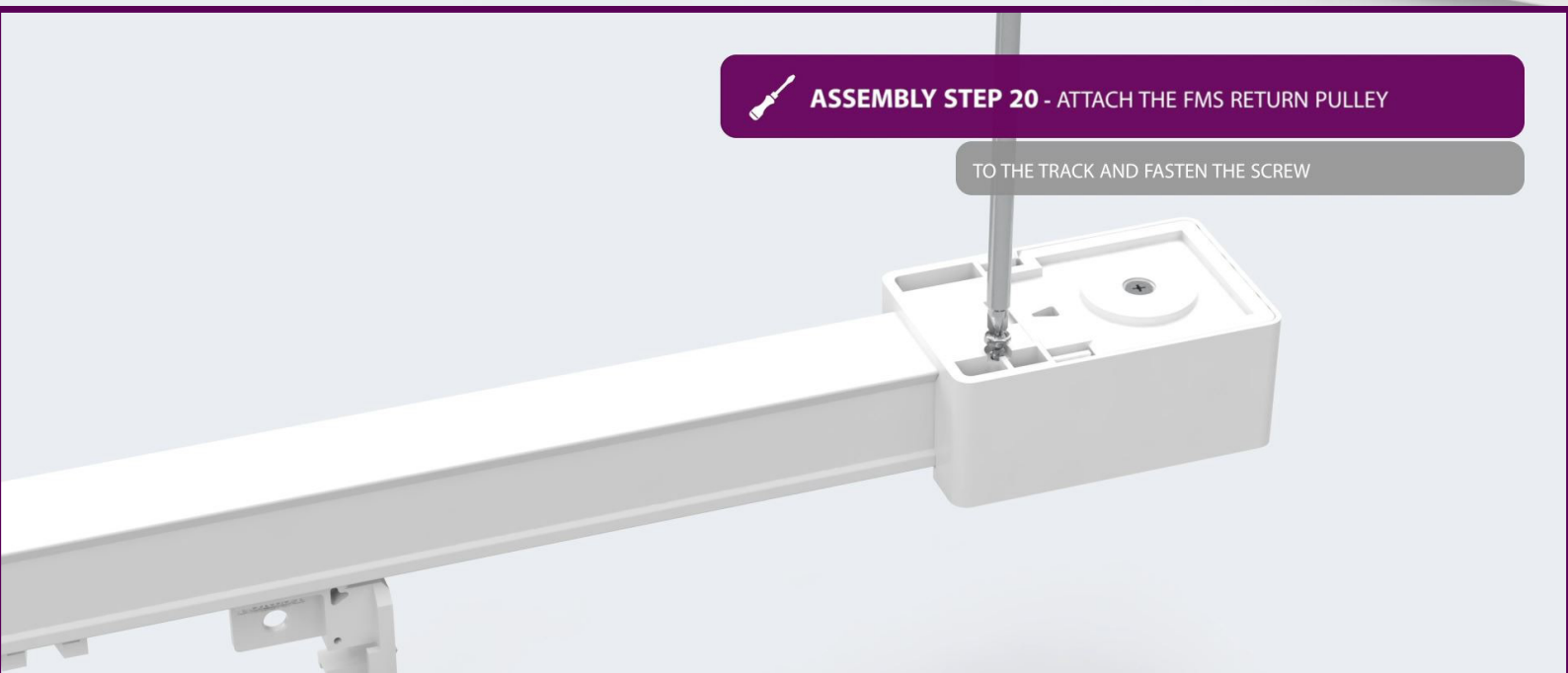
TO ENSURE A GOOD FIXATION AND TIGHTEN THE REMAINING SCREWS





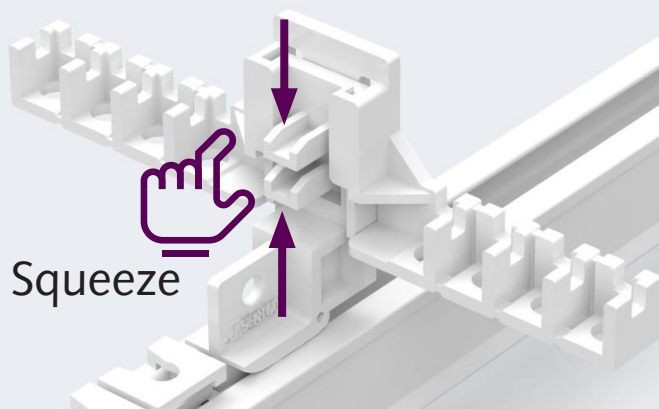
ASSEMBLY STEP 20 - ATTACH THE FMS RETURN PULLEY

TO THE TRACK AND FASTEN THE SCREW



ASSEMBLY STEP 21 - ATTACH THE FMS WAVE ARM

TO THE FMS MASTER CARRIER

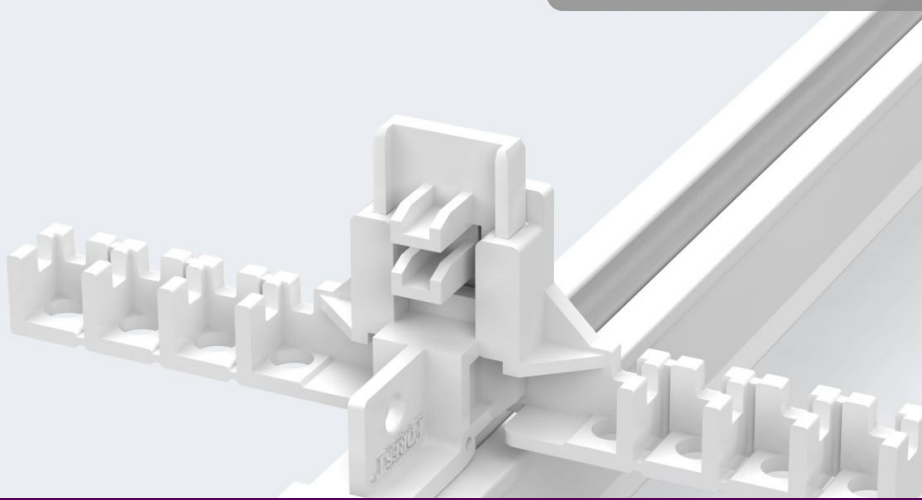




ASSEMBLY STEP 22 - CHOOSE THE REQUIRED HEIGHT SETTING

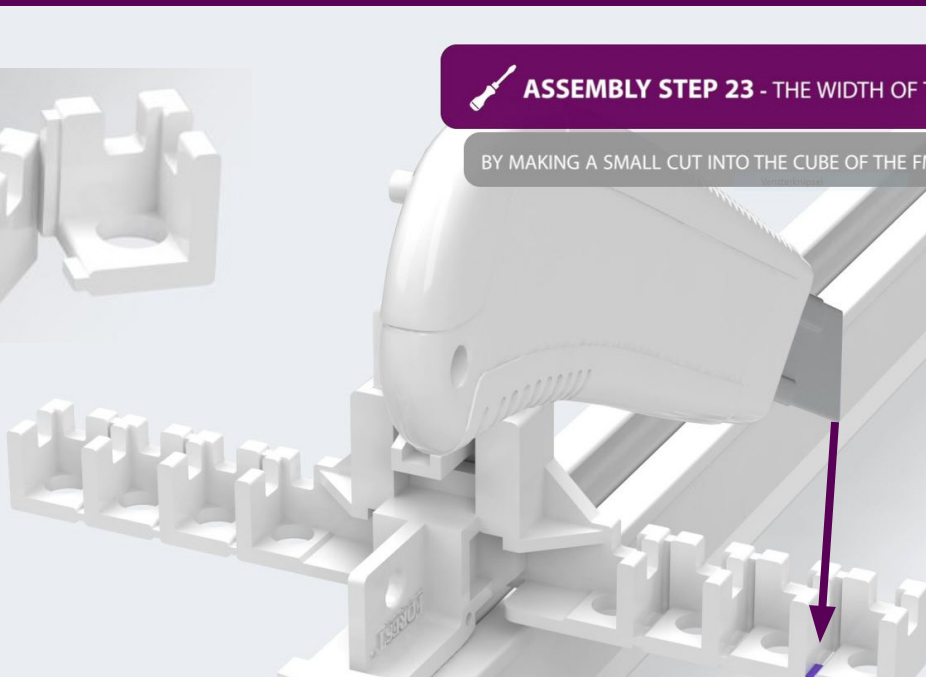
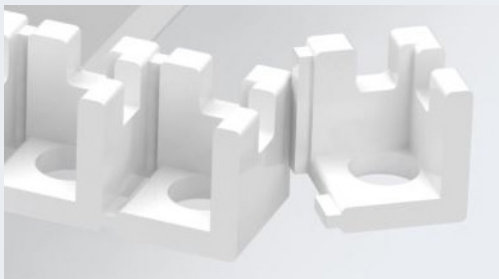
BY CHOOSING ONE OF THE THREE POSITIONS (YOU CAN HEAR THE CLICKS)

1
2
3



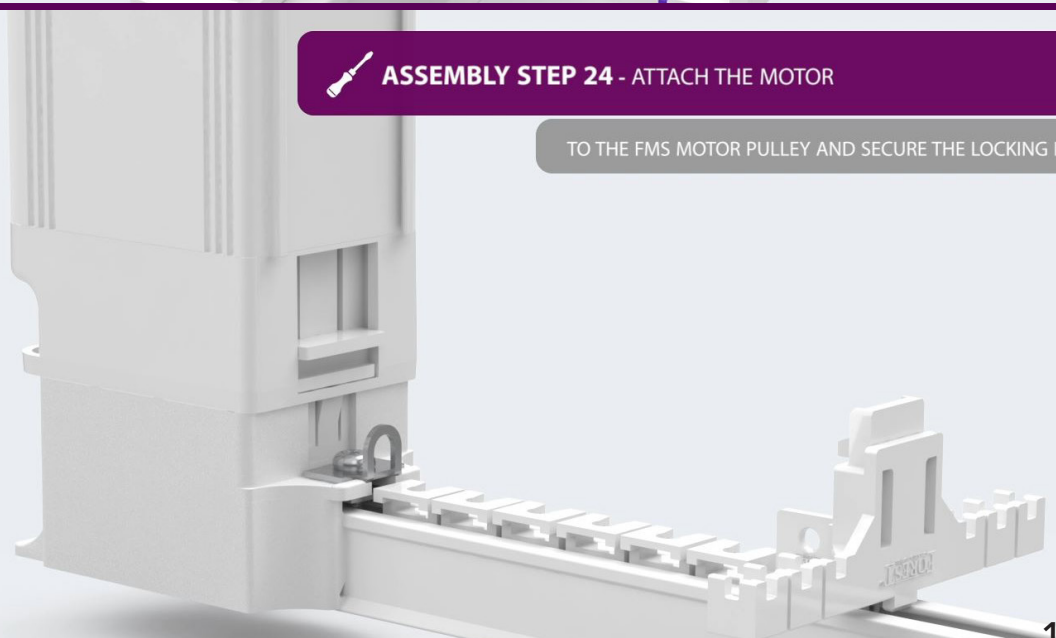
ASSEMBLY STEP 23 - THE WIDTH OF THE WAVE CAN BE ADJUSTED

BY MAKING A SMALL CUT INTO THE CUBE OF THE FMS WAVE ARM AND BREAKING IT OFF



ASSEMBLY STEP 24 - ATTACH THE MOTOR

TO THE FMS MOTOR PULLEY AND SECURE THE LOCKING PIN

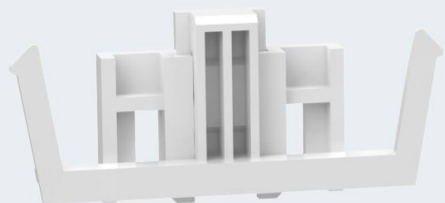




ASSEMBLY STEP 25 - TAKE THE END HOOK AND CHOOSE

THE REQUIRED HEIGHT SETTING (YOU CAN HEAR THE CLICKS)

- 1
- 2
- 3**



ASSEMBLY STEP 26 - FINISH THE ASSEMBLY BY ATTACHING

THE END HOOK TO THE FMS MOTOR PULLEY



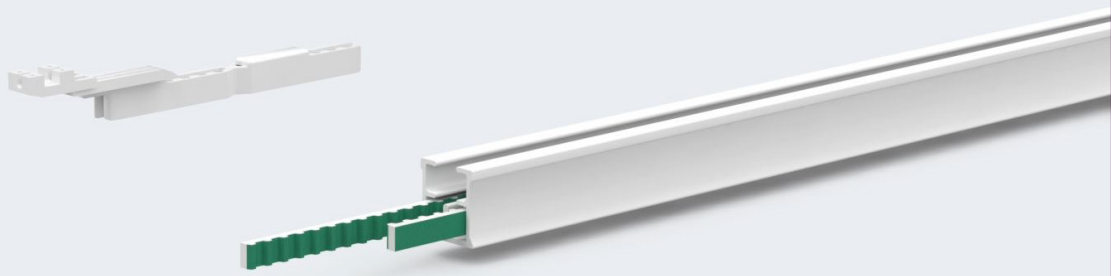
"The one way draw curtain assembly is now ready!"



ASSEMBLY INSTRUCTIONS FOR
CENTER DRAW CURTAINS

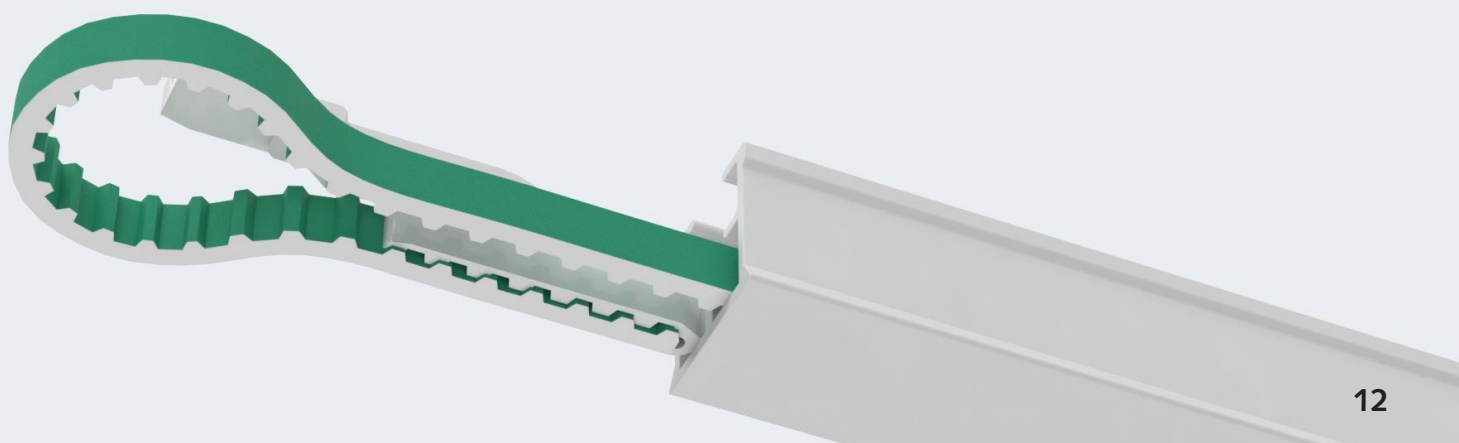
 **ASSEMBLY STEP 27** - CONNECT THE FMS BELT CONNECTOR

AND SLIDE IT PARTIALLY INTO THE TRACK



 **ASSEMBLY STEP 28** - CONNECT THE OTHER END OF THE BELT

TO THE FMS BELT CONNECTOR





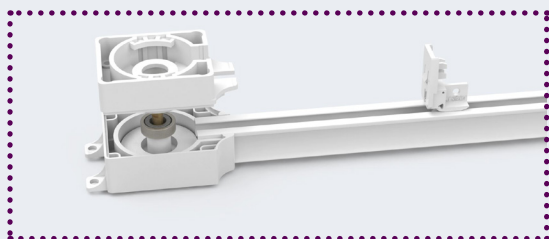
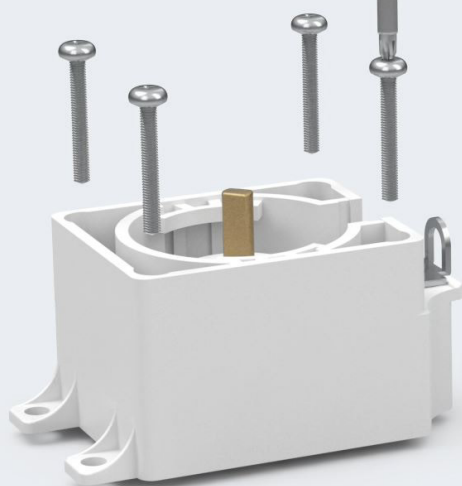
ASSEMBLY STEP 29 - ATTACH THE FMS MASTER CARRIER

AND SLIDE THE FMS BELT CONNECTOR INTO THE TRACK



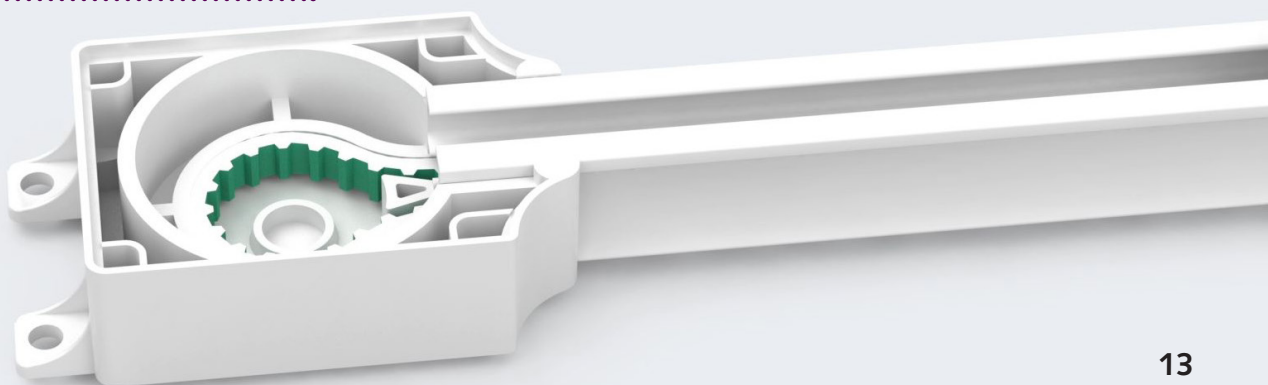
ASSEMBLY STEP 30 - OPEN THE FMS MOTOR PULLEY

BY REMOVING THE SCREWS



ASSEMBLY STEP 31 - POSITION THE FMS MOTOR PULLEY PIECES

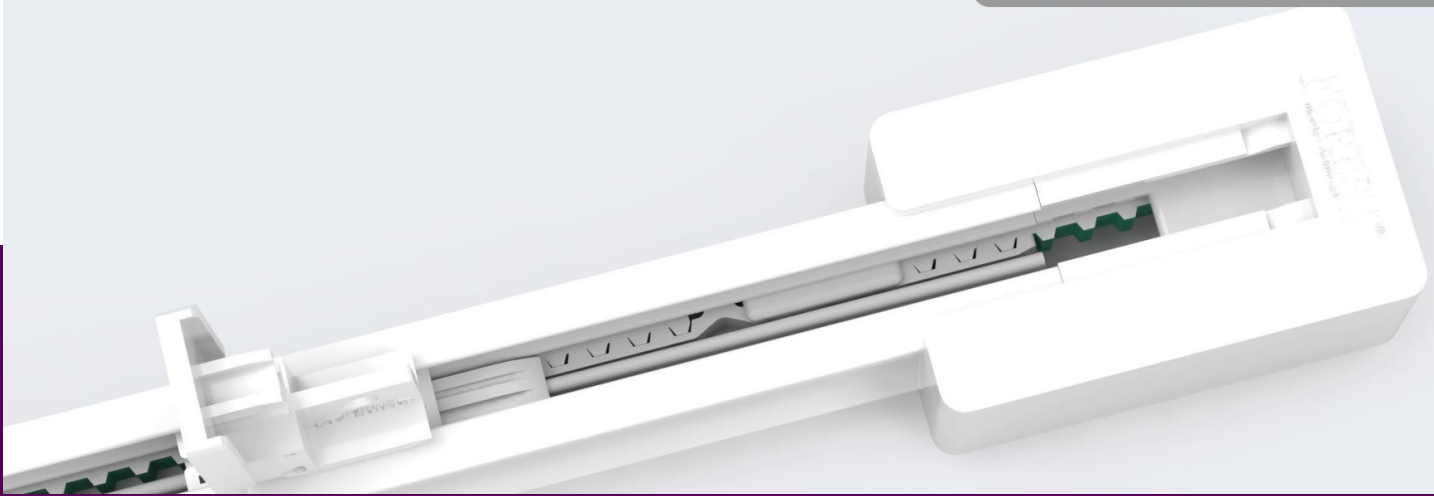
TO THE TRACK





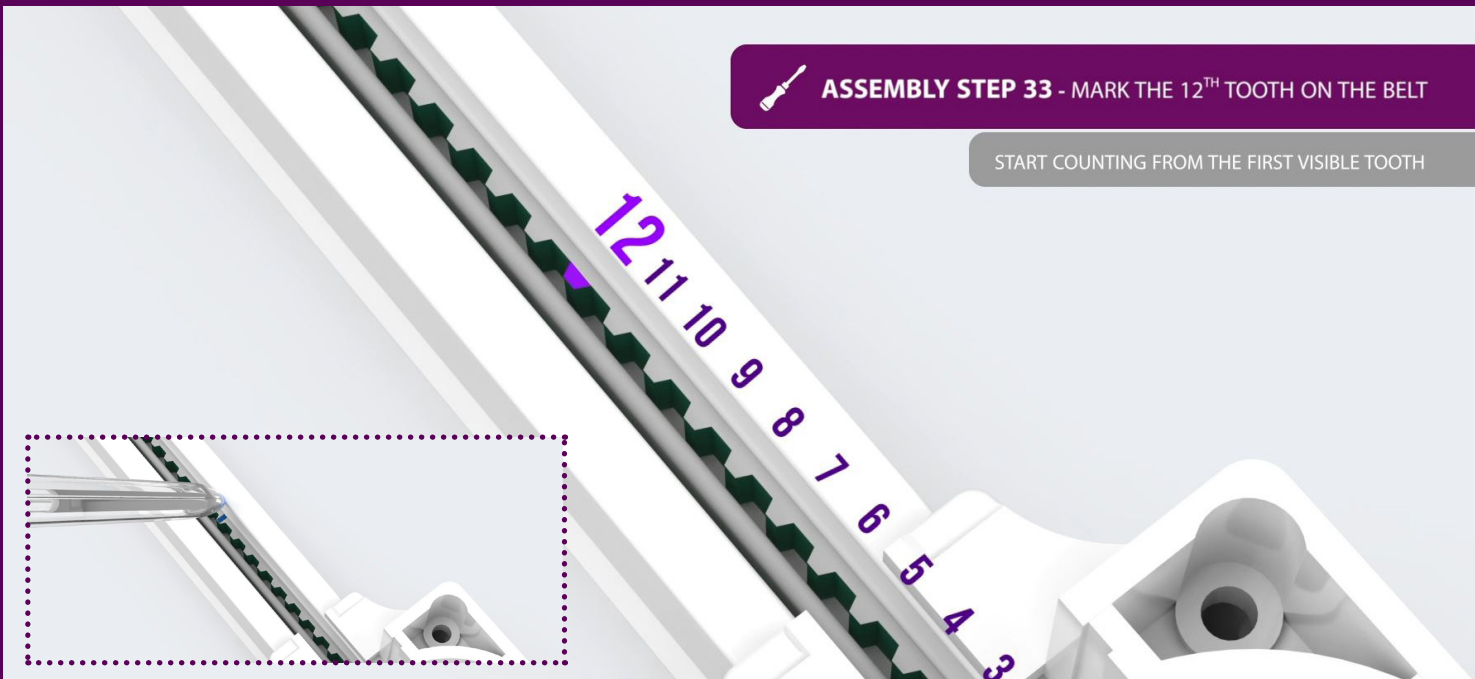
ASSEMBLY STEP 32 - SLIDE THE FMS MASTER CARRIER

FULLY INTO THE TRACK



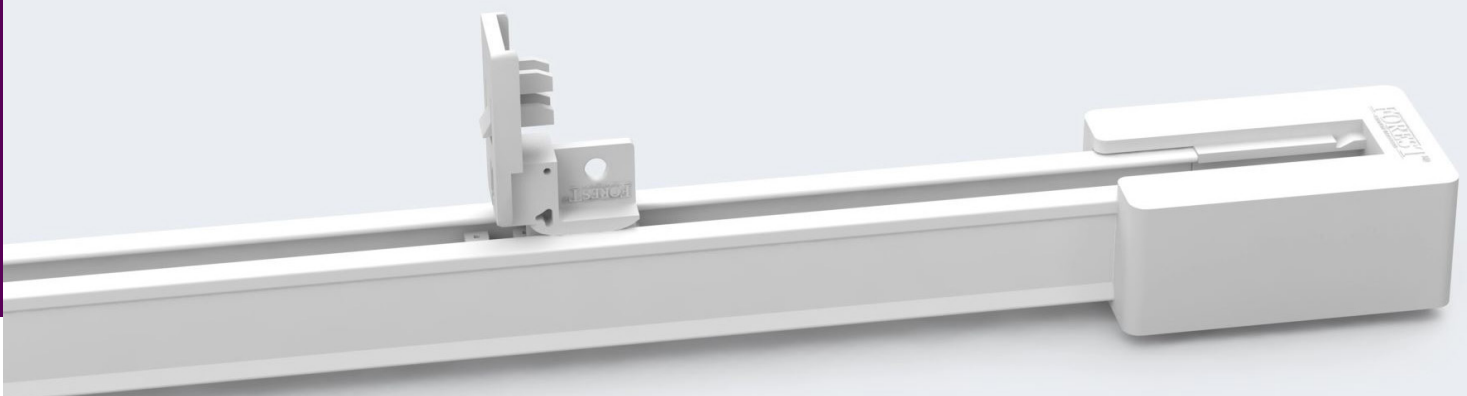
ASSEMBLY STEP 33 - MARK THE 12TH TOOTH ON THE BELT

START COUNTING FROM THE FIRST VISIBLE TOOTH



ASSEMBLY STEP 34 - SLIDE THE FMS MASTER CARRIER

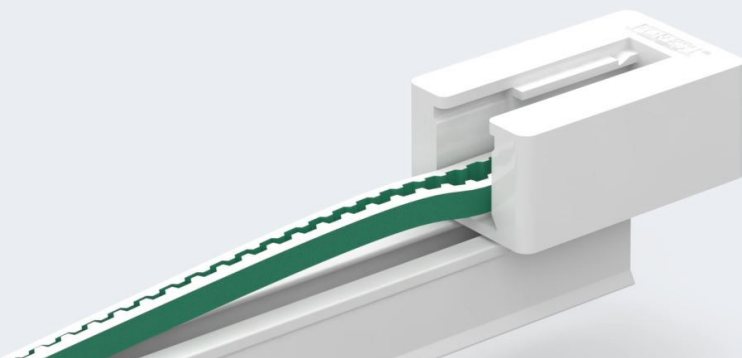
AWAY FROM THE RETURN PULLEY SO IT CAN BE TAKEN OFF



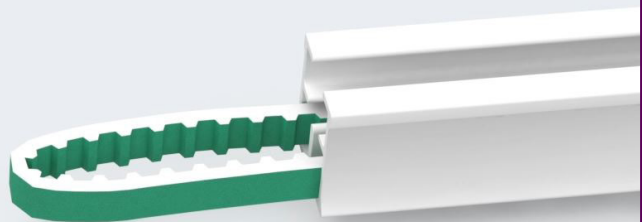
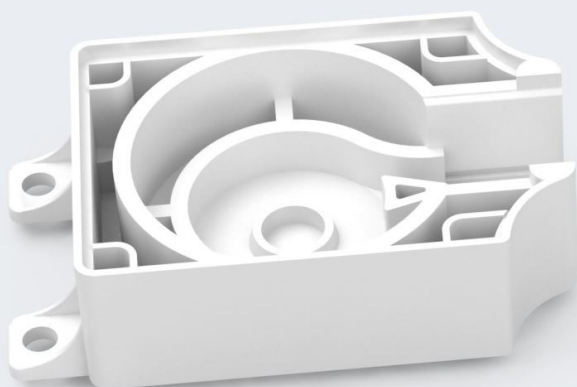


ASSEMBLY STEP 35 - TAKE OFF THE RETURN PULLEY

LIFT IT UP ONTO THE TRACK



ASSEMBLY STEP 36 - REMOVE THE FMS MOTOR PULLEY



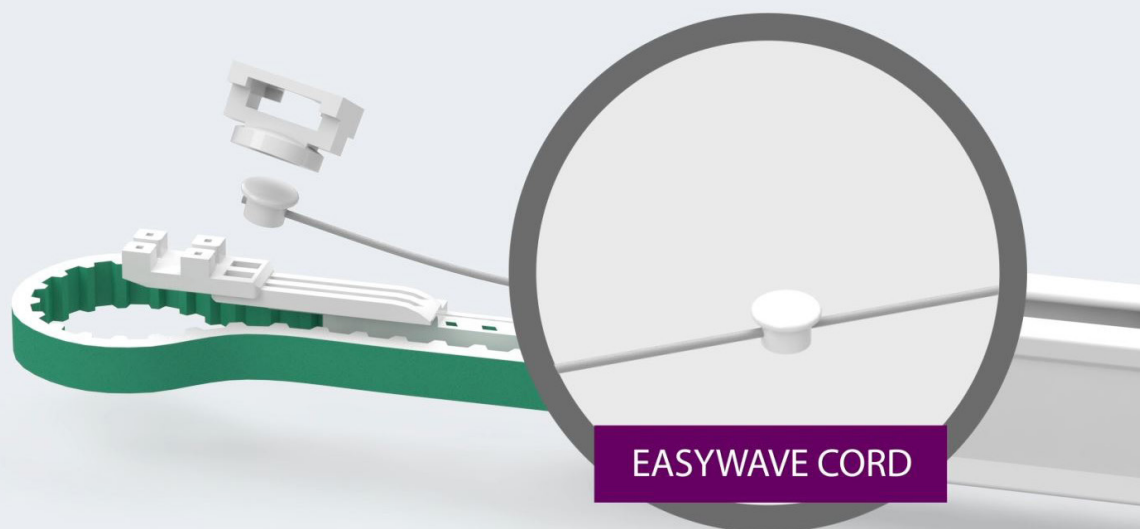
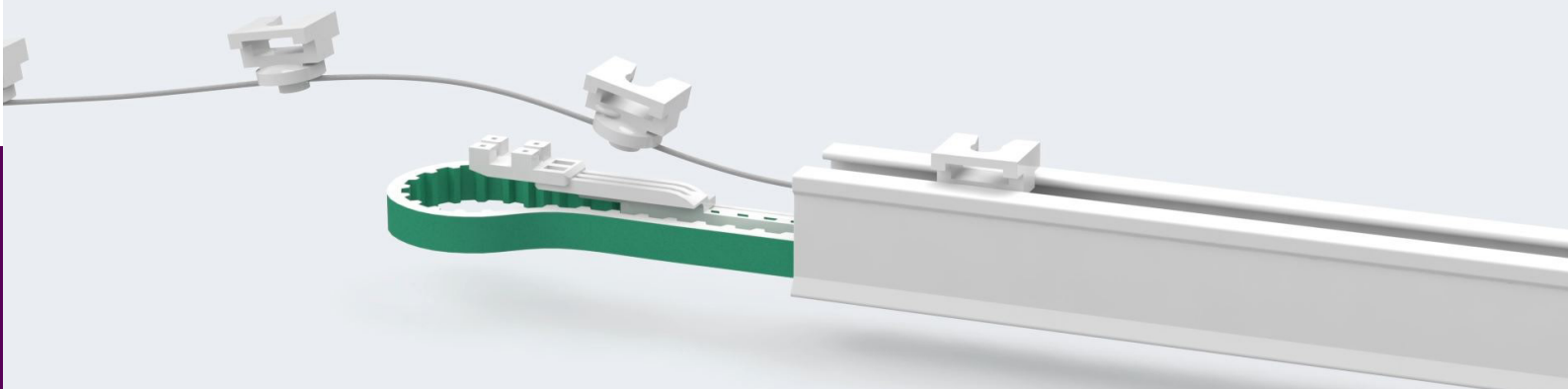
ASSEMBLY STEP 37 - REMOVE THE FMS MASTER CARRIER





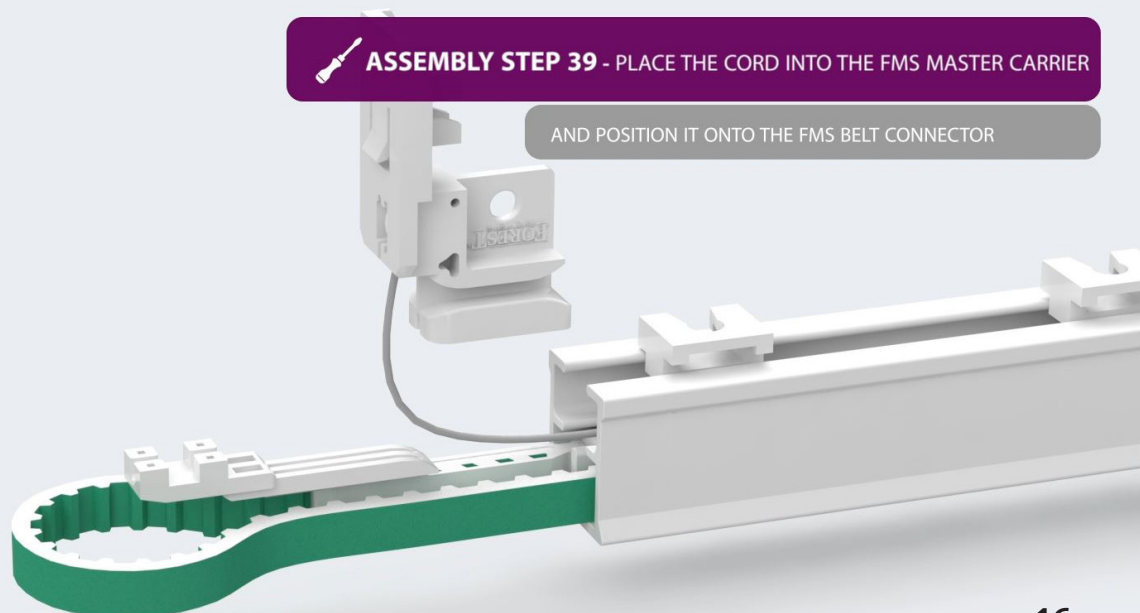
ASSEMBLY STEP 38 - SLIDE IN THE CARRIERS

AND REMOVE THE LAST CARRIER FROM THE CORD



ASSEMBLY STEP 39 - PLACE THE CORD INTO THE FMS MASTER CARRIER

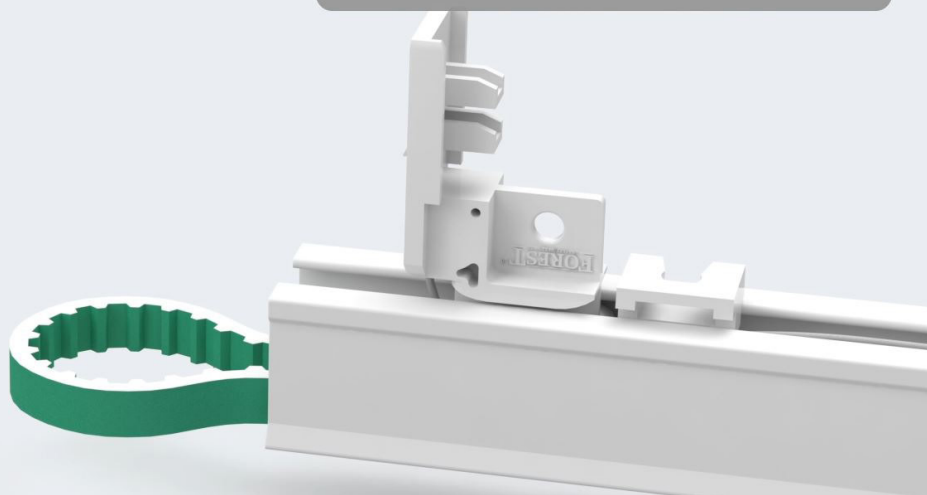
AND POSITION IT ONTO THE FMS BELT CONNECTOR





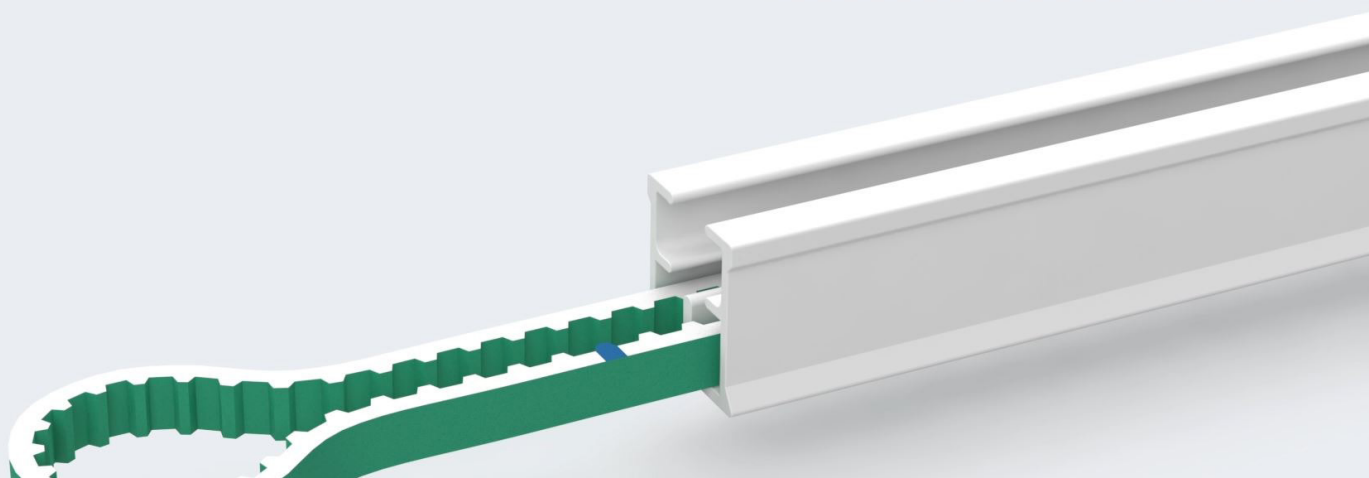
ASSEMBLY STEP 40 - SLIDE THE FMS MASTER CARRIER

INTO THE TRACK



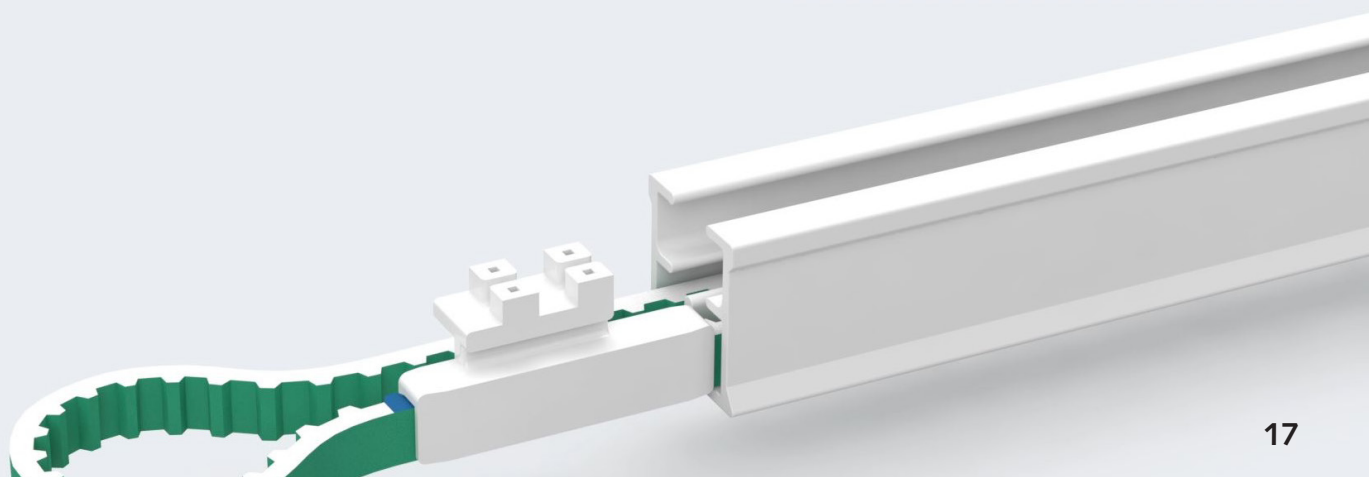
ASSEMBLY STEP 41 - SLIDE OUT THE BELT

UNTIL THE MARKED TOOTH BECOMES VISIBLE



ASSEMBLY STEP 42 - CLAMP THE FMS BELT CONNECTOR

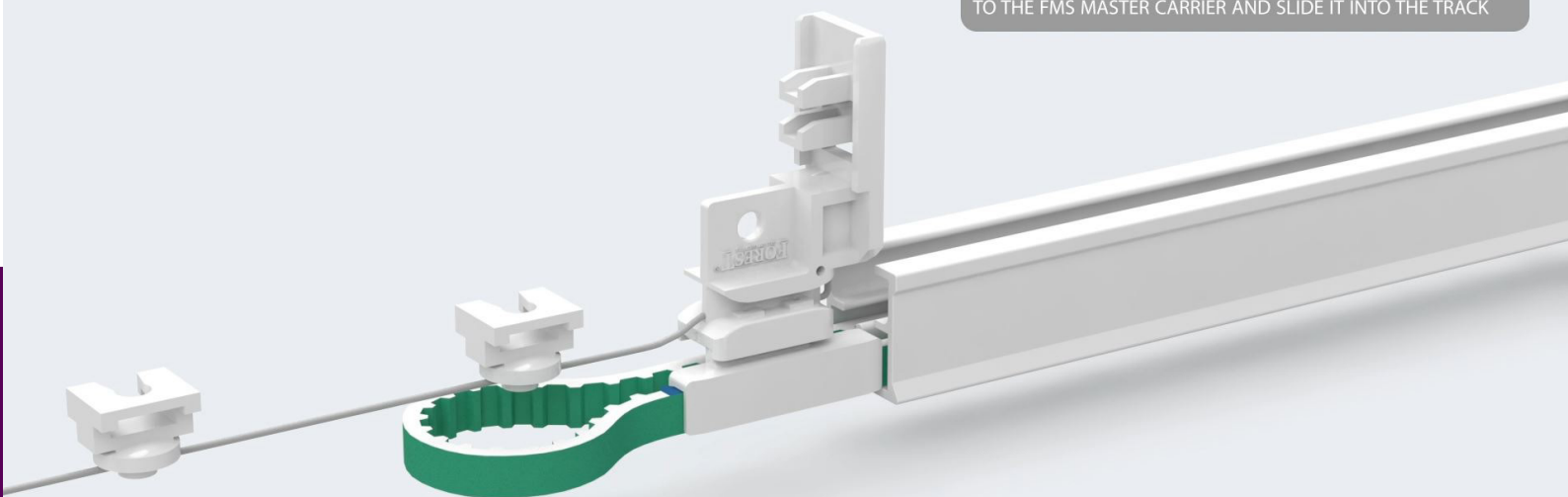
NEXT TO THE VISIBLE MARK



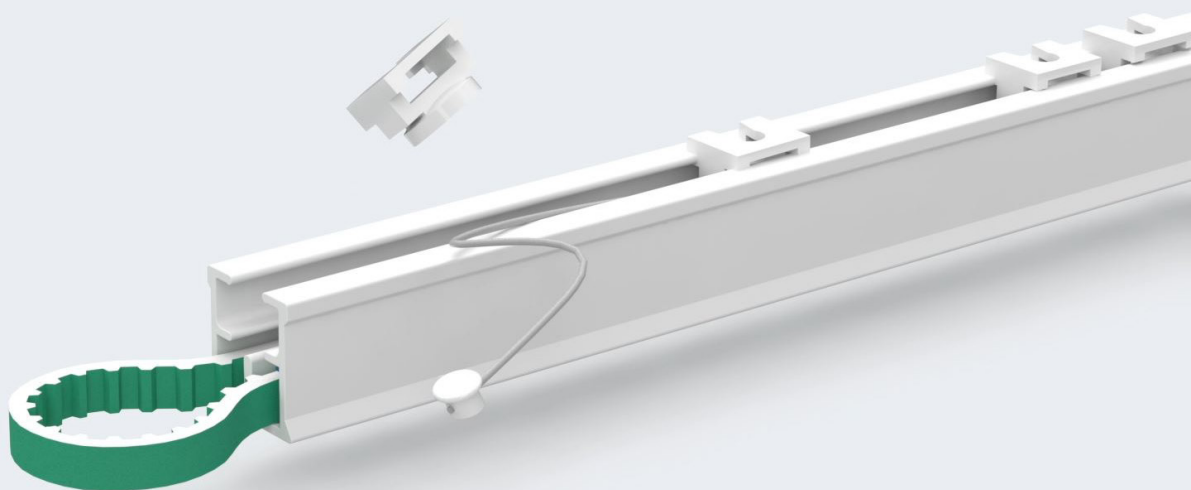


ASSEMBLY STEP 43 - ATTACH THE FMS MASTER CARRIER AND CORD

TO THE FMS MASTER CARRIER AND SLIDE IT INTO THE TRACK

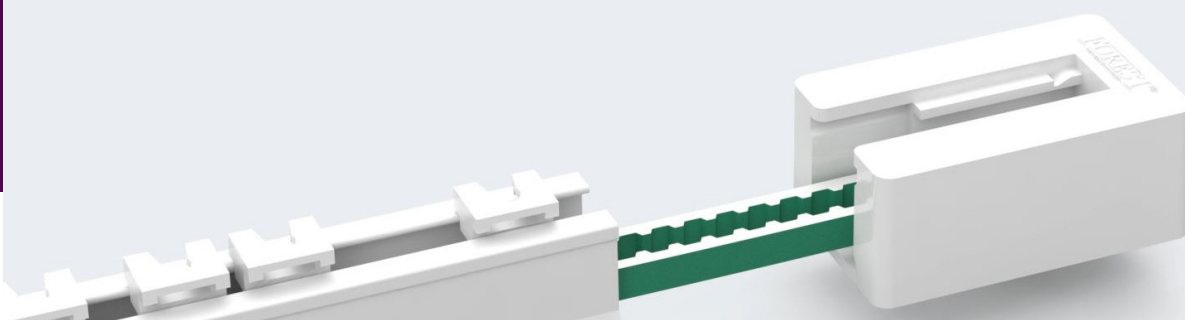


ASSEMBLY STEP 44 - REMOVE THE LAST CARRIER FROM THE CORD



ASSEMBLY STEP 45 - TAKE THE RETURN PULLEY OF THE TRACK

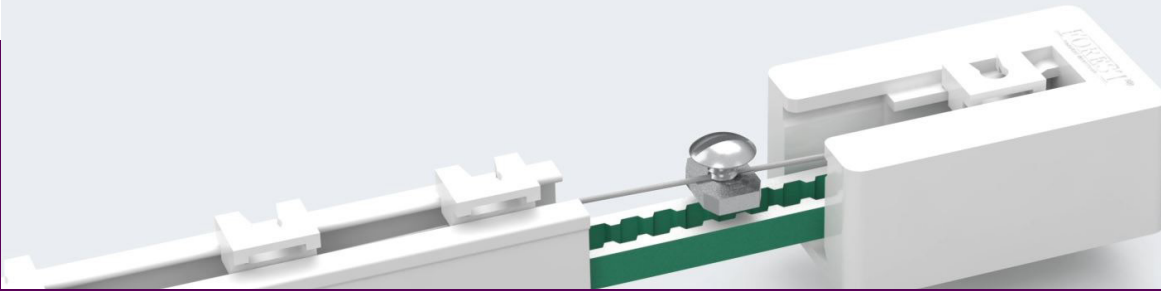
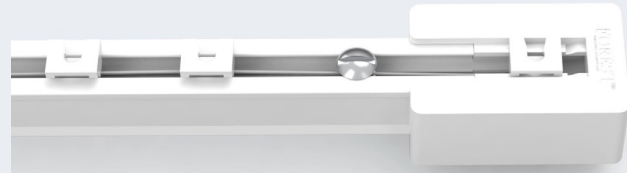
AND PLACE ONE CAP FROM THE CORD INTO THE FMS RETURN PULLEY





ASSEMBLY STEP 46 - INSERT THE LOCK SCREW INTO THE TRACK

AND SLIDE THE TRACK INTO THE FMS RETURN PULLEY



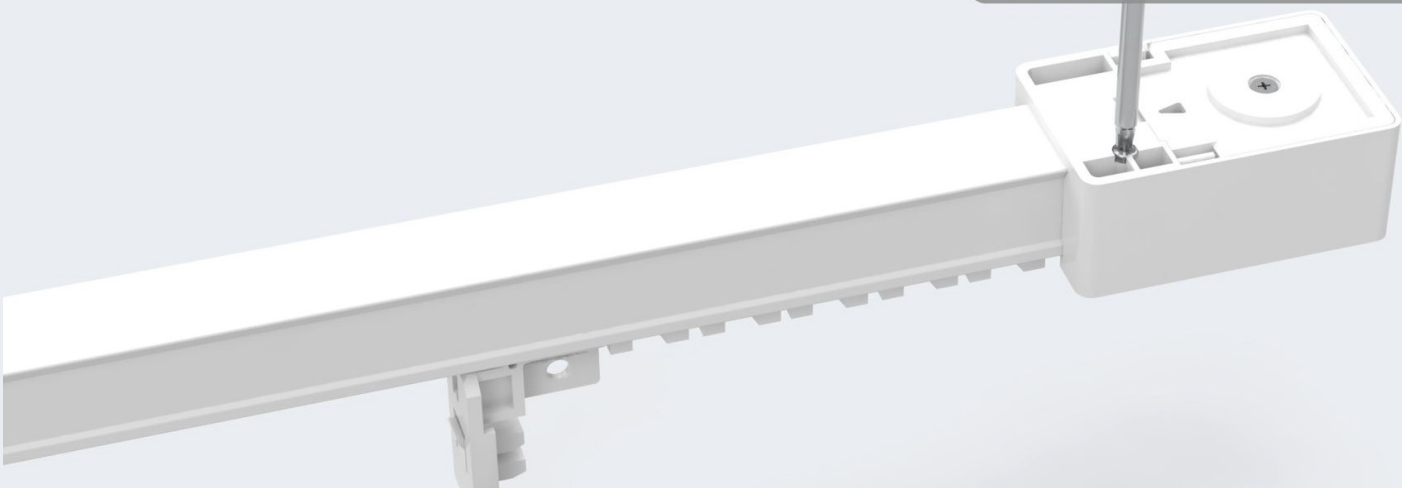
ASSEMBLY STEP 47 - FASTEN THE LOCK SCREW

TO SECURE THE CORD CAP INTO THE FMS RETURN PULLEY



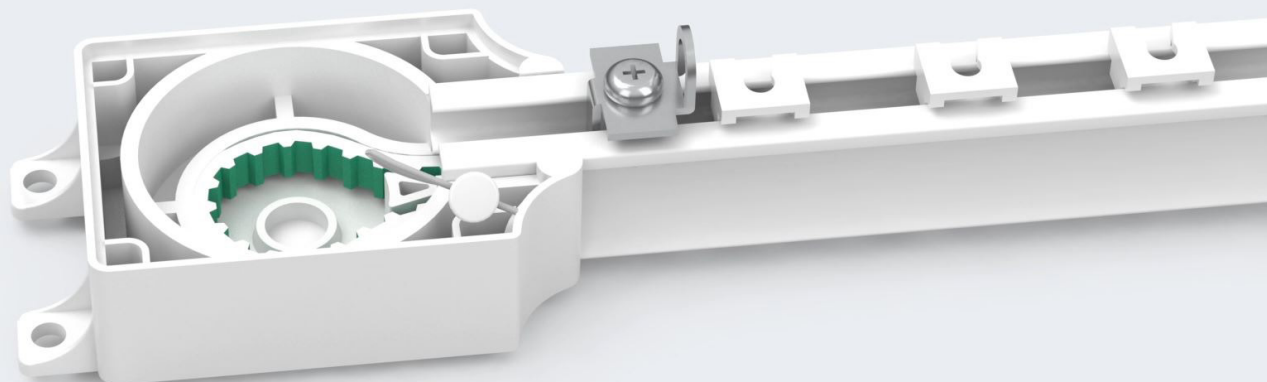
ASSEMBLY STEP 48 - LOCK THE FMS RETURN PULLEY

BY FASTENING THE SCREW OF THE RETURN PULLEY



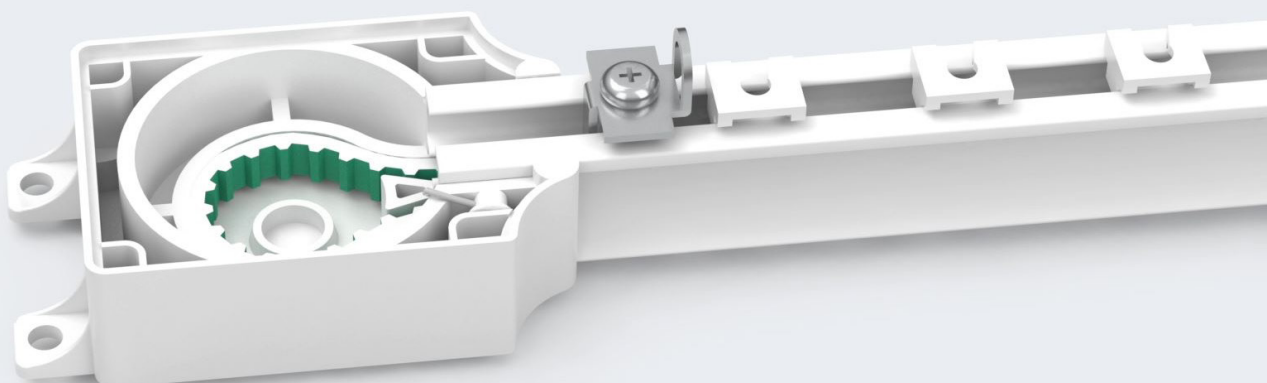
 **ASSEMBLY STEP 49** - PLACE THE FIXATING CLIP INTO THE TRACK

AND PUT THE FMS MOTOR PULLEY BACK ONTO THE TRACK



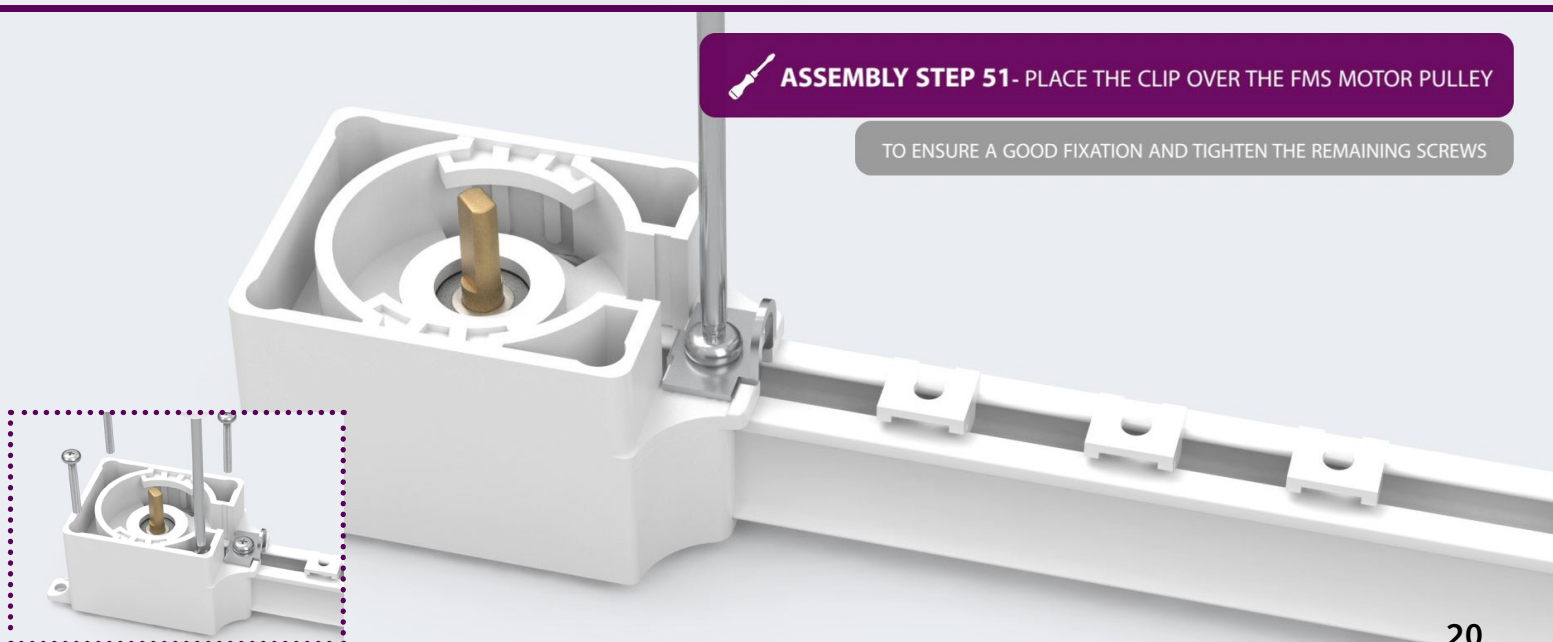
 **ASSEMBLY STEP 50** - LOCK THE CORD INTO THE FMS MOTOR PULLEY

AND REPOSITION THE PARTS OF THE FMS MOTOR PULLEY



 **ASSEMBLY STEP 51** - PLACE THE CLIP OVER THE FMS MOTOR PULLEY

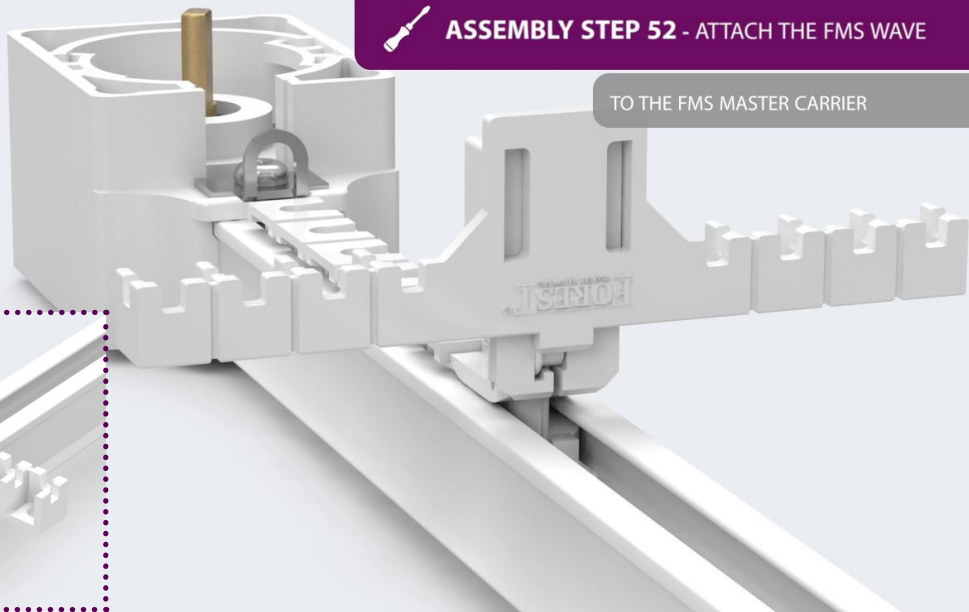
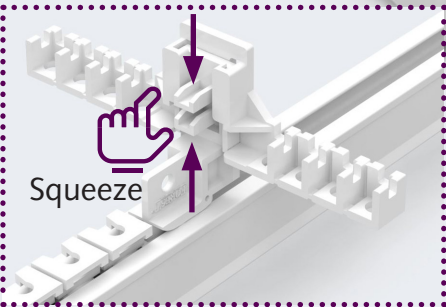
TO ENSURE A GOOD FIXATION AND TIGHTEN THE REMAINING SCREWS






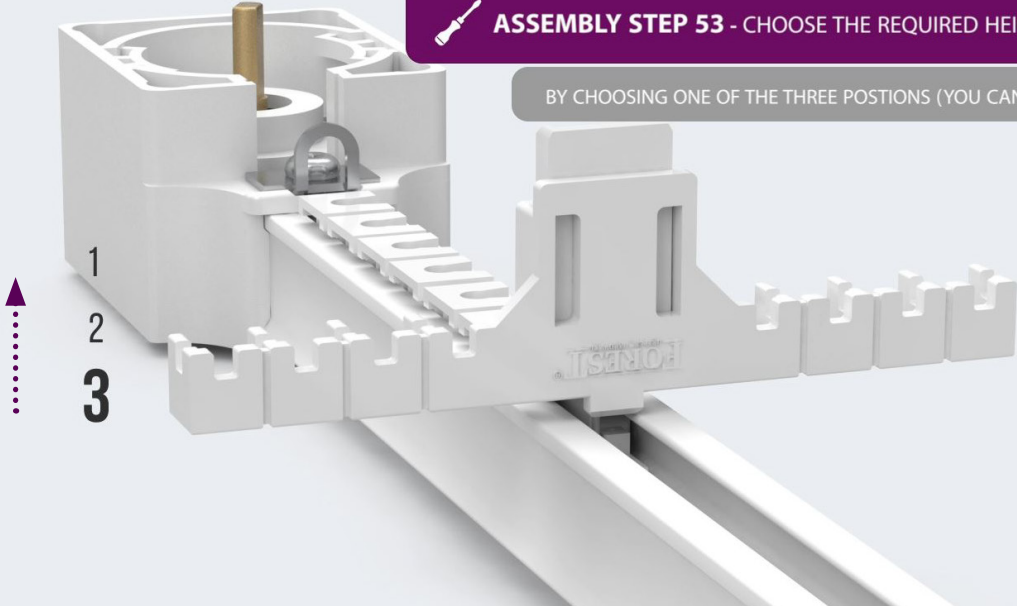
 **ASSEMBLY STEP 52 - ATTACH THE FMS WAVE**

TO THE FMS MASTER CARRIER



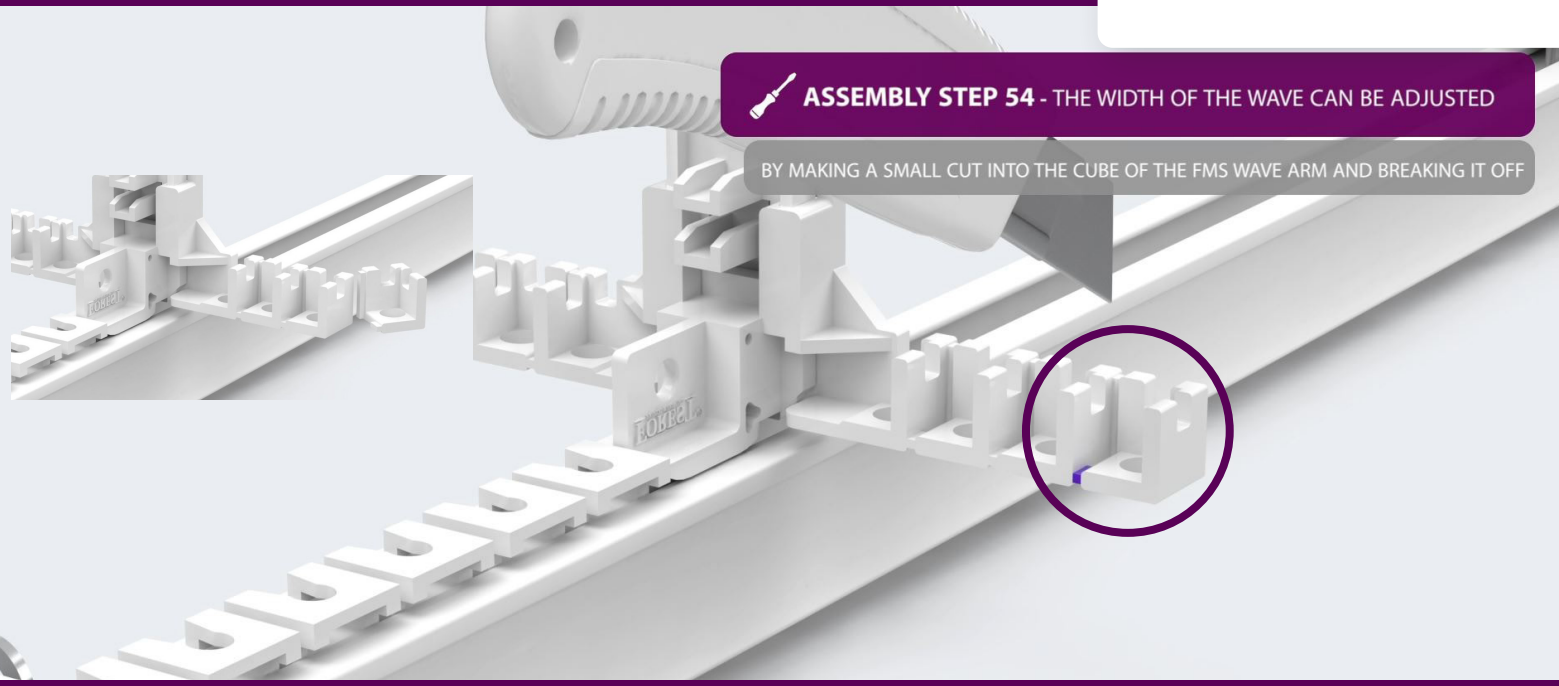
 **ASSEMBLY STEP 53 - CHOOSE THE REQUIRED HEIGHT SETTING**

BY CHOOSING ONE OF THE THREE POSITIONS (YOU CAN HEAR THE CLICKS)



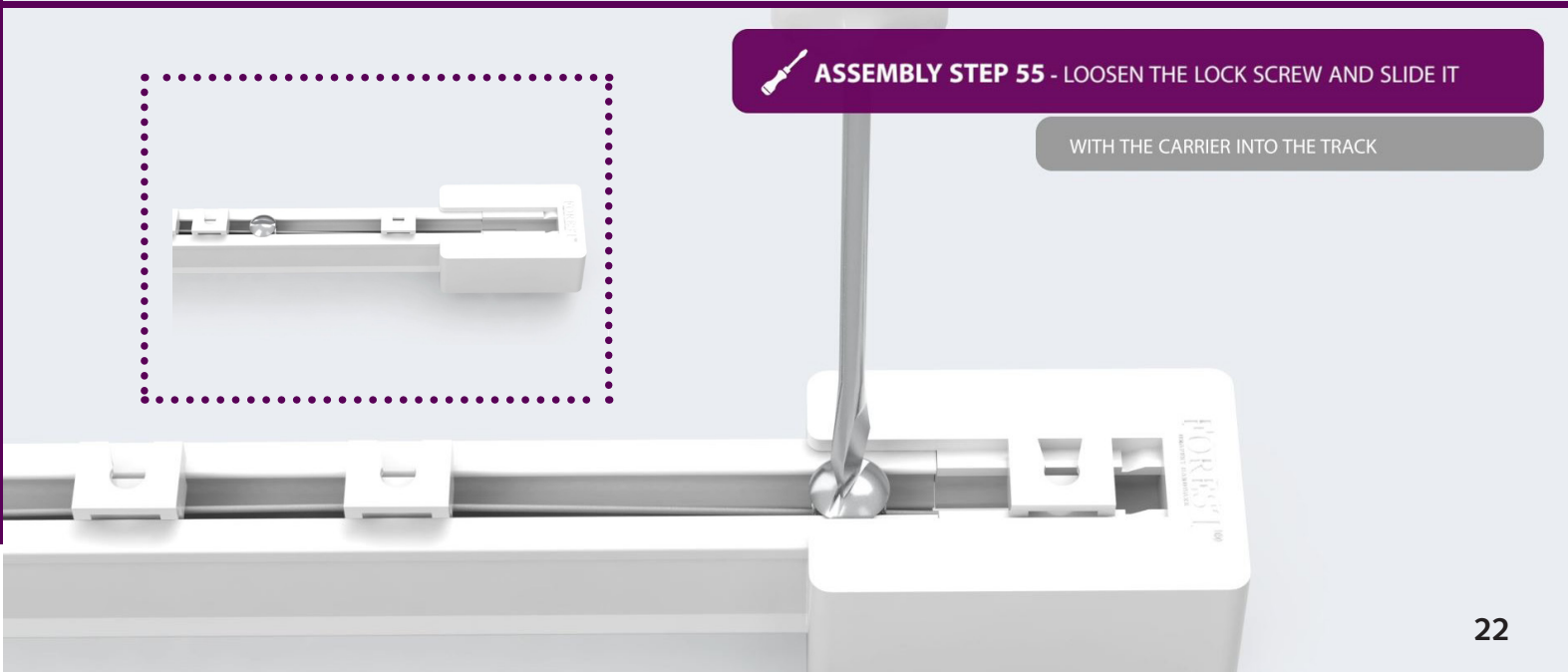
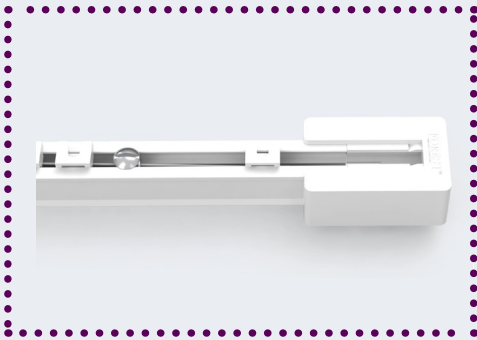
 **ASSEMBLY STEP 54** - THE WIDTH OF THE WAVE CAN BE ADJUSTED

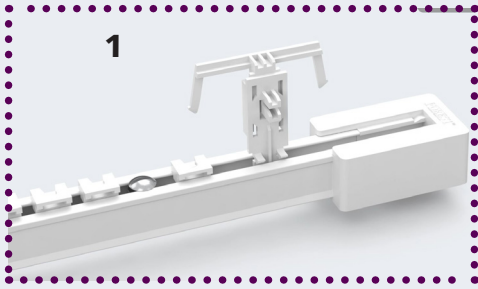
BY MAKING A SMALL CUT INTO THE CUBE OF THE FMS WAVE ARM AND BREAKING IT OFF



 **ASSEMBLY STEP 55** - LOOSEN THE LOCK SCREW AND SLIDE IT

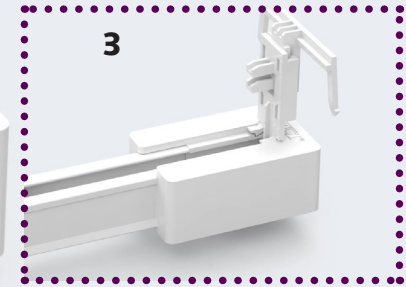
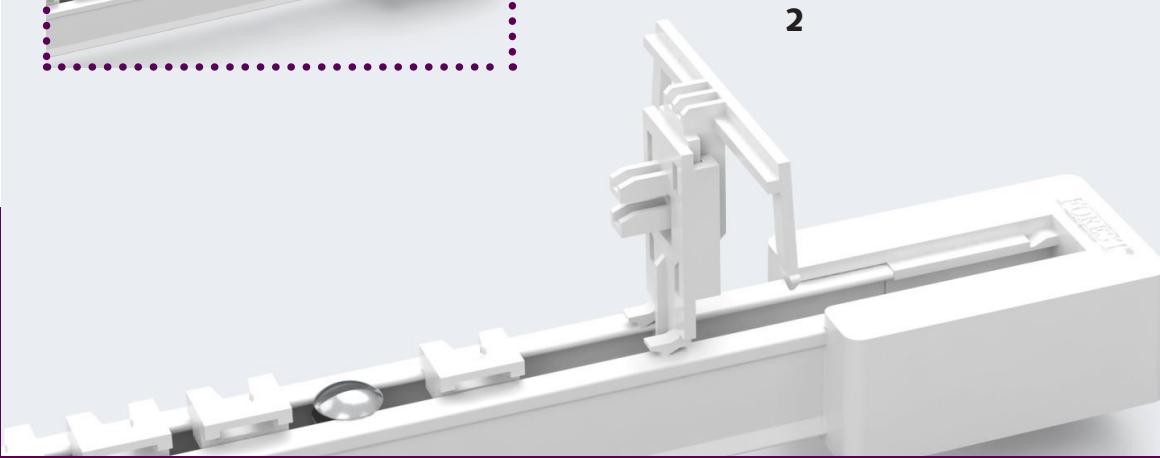
WITH THE CARRIER INTO THE TRACK





ASSEMBLY STEP 56 - ATTACH THE END HOOK TO THE TRACK

AND SLIDE IT INTO THE FMS RETURN PULLEY



ASSEMBLY STEP 57 - PUT THE CARRIER AND LOCK SCREW BACK

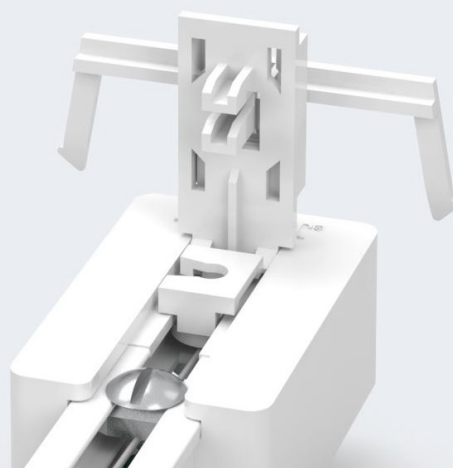
INTO THE FMS RETURN PULLEY AND TIGHTEN THE SCREW



ASSEMBLY STEP 58 - CHOOSE THE REQUIRED HEIGHT SETTING

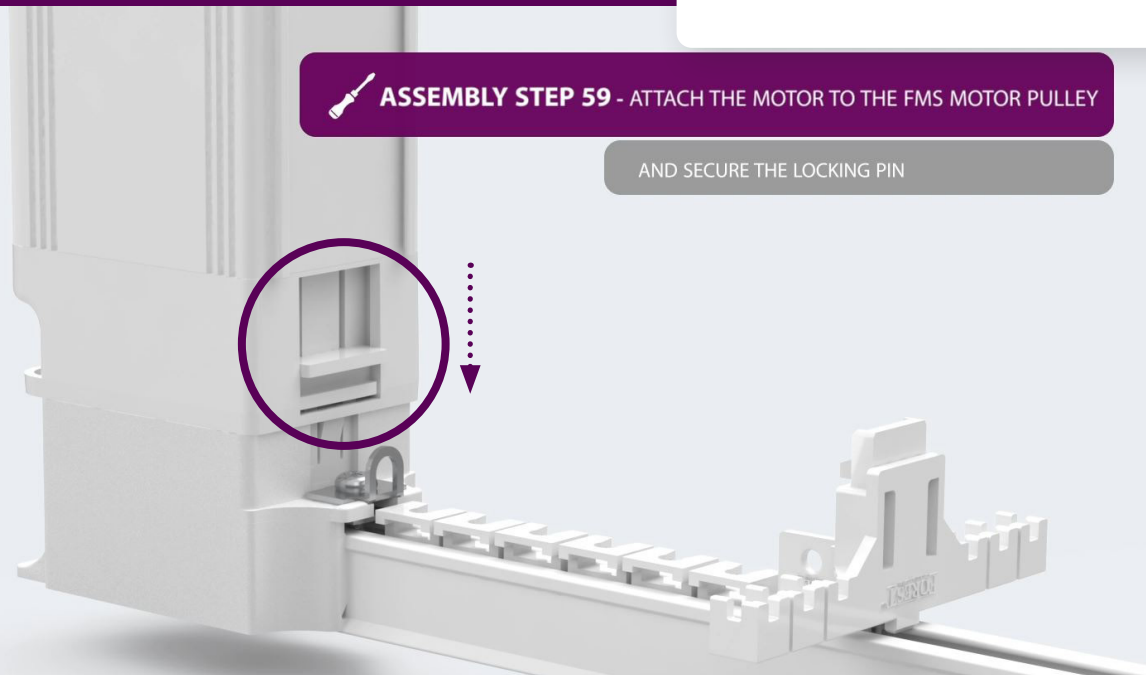
BY CHOOSING ON OF THE THREE POSITIONS (YOU CAN HEAR THE CLICKS)

- 1
- 2
- ▼ 3



 **ASSEMBLY STEP 59** - ATTACH THE MOTOR TO THE FMS MOTOR PULLEY

AND SECURE THE LOCKING PIN

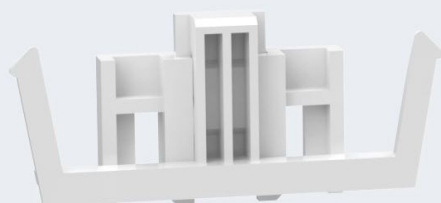


 **ASSEMBLY STEP 60** - TAKE THE SECOND END HOOK

AND CHOOSE THE REQUIRED HEIGHT SETTING

"Turn the Forest Shuttle motor in normal position"

- 1
- 2
- 3**



 **ASSEMBLY STEP 61** - FINISH THE ASSEMBLY BY ATTACHING

THE END HOOK TO THE FMS MOTOR PULLEY

"The center draw curtain assembly is now ready!"

